

INTRODUCES

SANTA FE

GABRIELLE NEIL DESIGN

AVAILABLE JULY 2023
Last Call
Feb 1, 2023
R-5



Cream Santa Fe Main



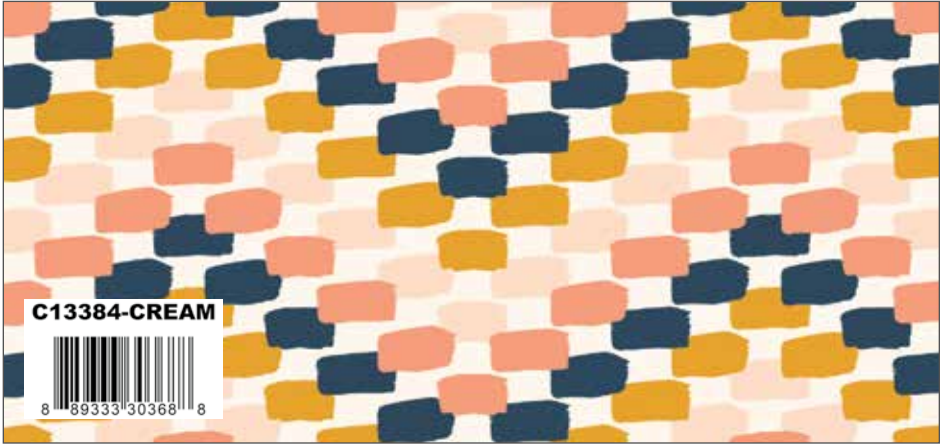
Cream Santa Fe Triangles



Mustard Santa Fe Mustangs



Mustard Santa Fe Motifs



Cream Santa Fe Chevron



Cream Santa Fe Stripes



Butterscotch Santa Fe Strokes



Cream Santa Fe Squares



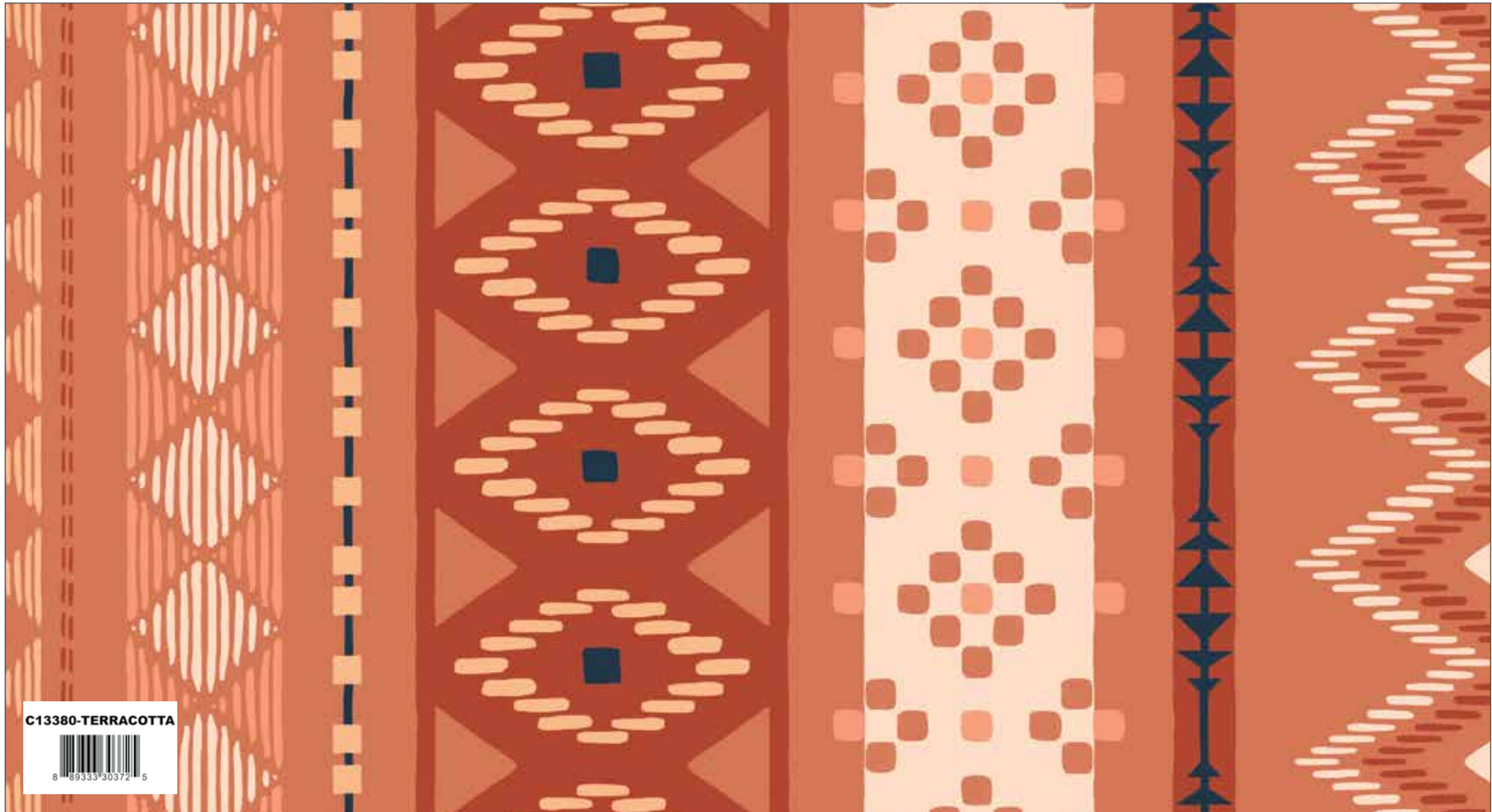
Honey Shabby



Ochre Painter's Watercolor Swirl



Oxford Solid



Terracotta Santa Fe Main



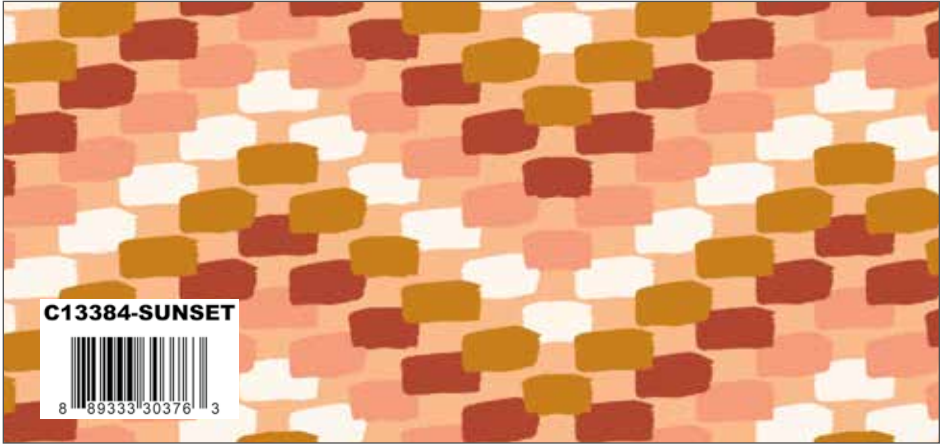
Blush Santa Fe Triangles



Rust Santa Fe Mustangs



Rust Santa Fe Motifs



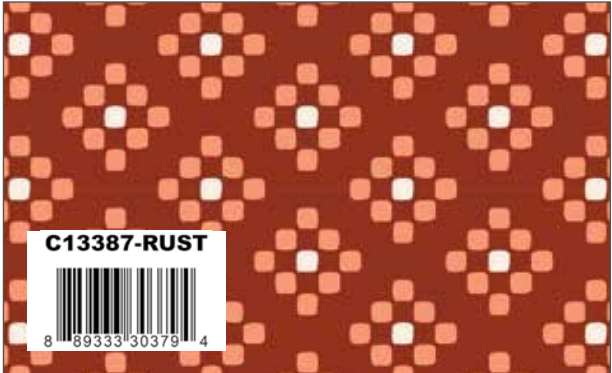
Sunset Santa Fe Chevron



Terracotta Santa Fe Stripes



Sunset Santa Fe Strokes



Rust Santa Fe Squares



Marmalade Dapple Dot



Brick Shabby



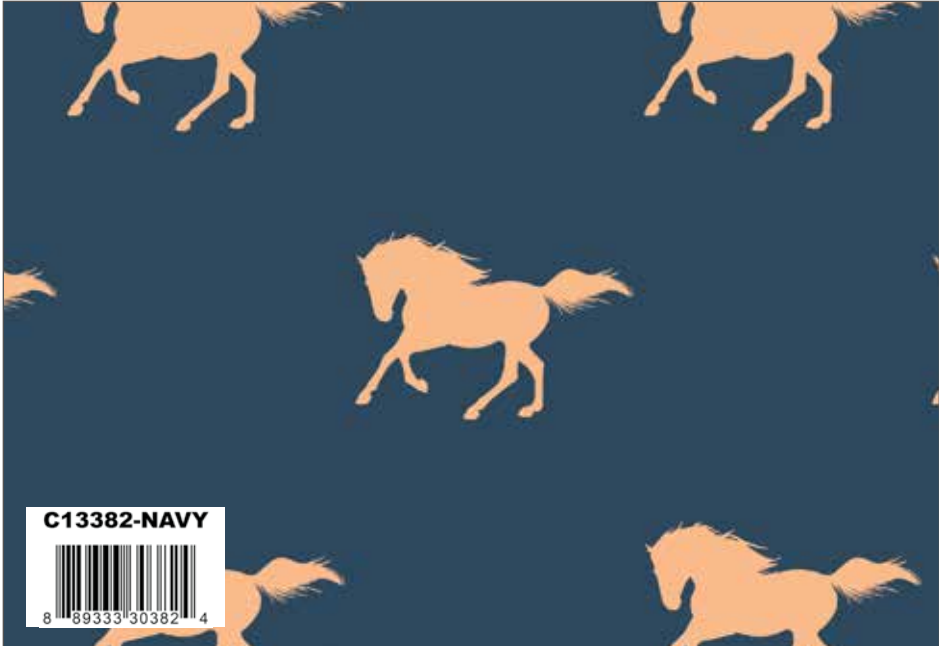
Burnt Umber Painter's Watercolor Swirl



Navy Santa Fe Main



Navy Santa Fe Triangles



Navy Santa Fe Mustangs



Denim Santa Fe Motifs



Navy Santa Fe Chevron



Navy Santa Fe Stripes



Tan Santa Fe Strokes



Denim Santa Fe Squares



Navy Shabby



Ultra Marine Painter's Watercolor Swirl



Autumn Solid

Diamonds by Material Girl Quilts



Quilt Size 78" x 78"

Fabric Requirements

1 FQ-13380-24 Santa Fe Fat Quarter Bundle

5 Yards C13387 Cream Squares

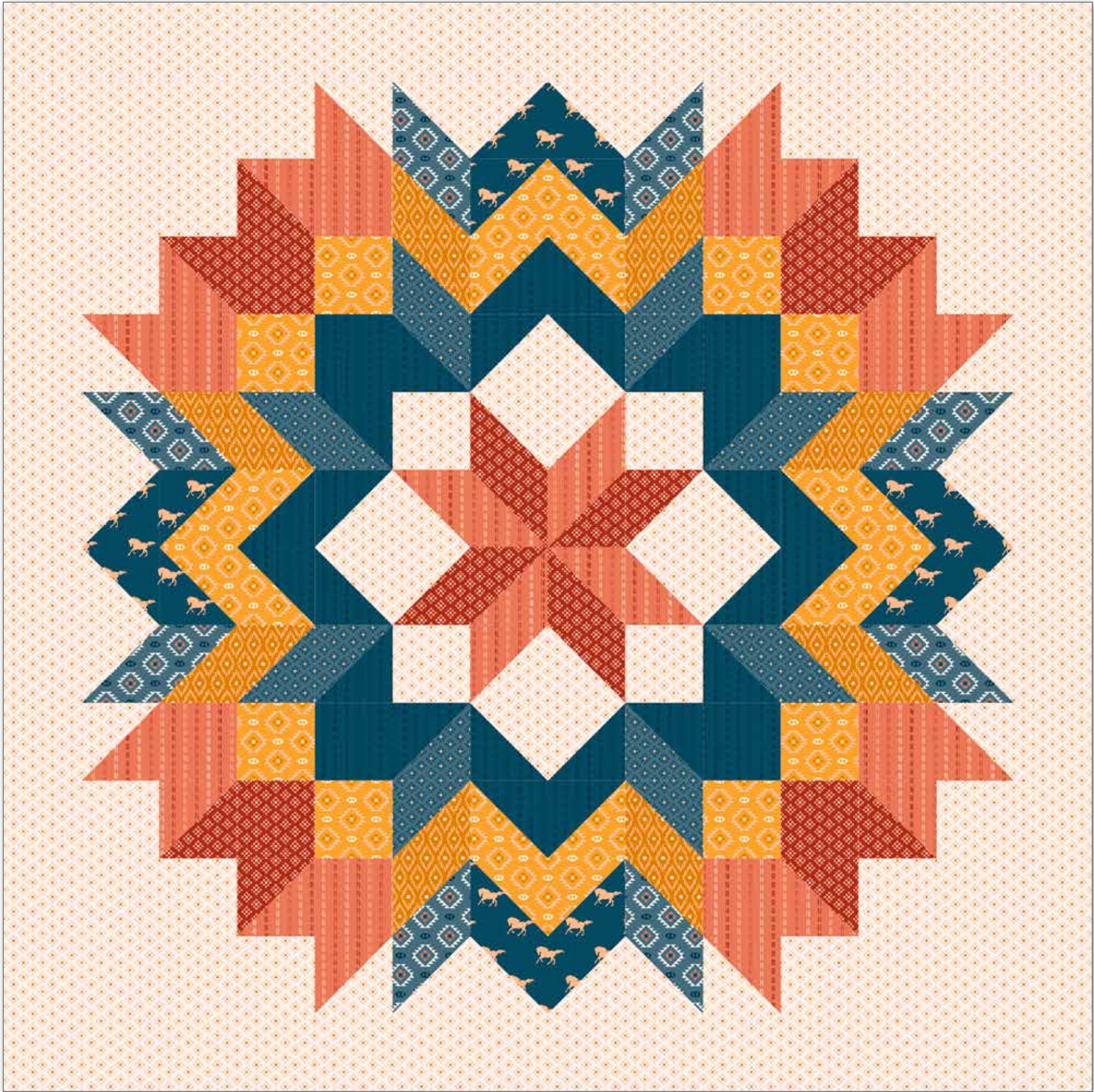


Pre-order the
P143-DIAMONDS
Quilt Pattern



* **Approximate** fabric requirements are listed to aid in estimating the amount of yardage to order and are **subject to change**.
The projects portrayed are virtual images. The look of the projects may differ when using actual fabric.
The quilt virtual shown on this page is different than the image shown on the pattern cover.

Radiance by Material Girl Quilts



Quilt Size 70" x 70"

Fabric Requirements

- 1/2 Yard C13382 Navy Mustangs
- 3/4 Yard C13383 Mustard Motifs
- 1/2 Yard C13383 Navy Motifs
- 3/4 Yard C13385 Navy Stripes
- 2/3 Yard C13385 Terracotta Stripes
- 1/2 Yard C13386 Butterscotch Strokes
- 2 3/4 Yards C13387 Cream Squares
- 1/2 Yard C13387 Navy Squares
- 1/2 Yard C13387 Rust Squares

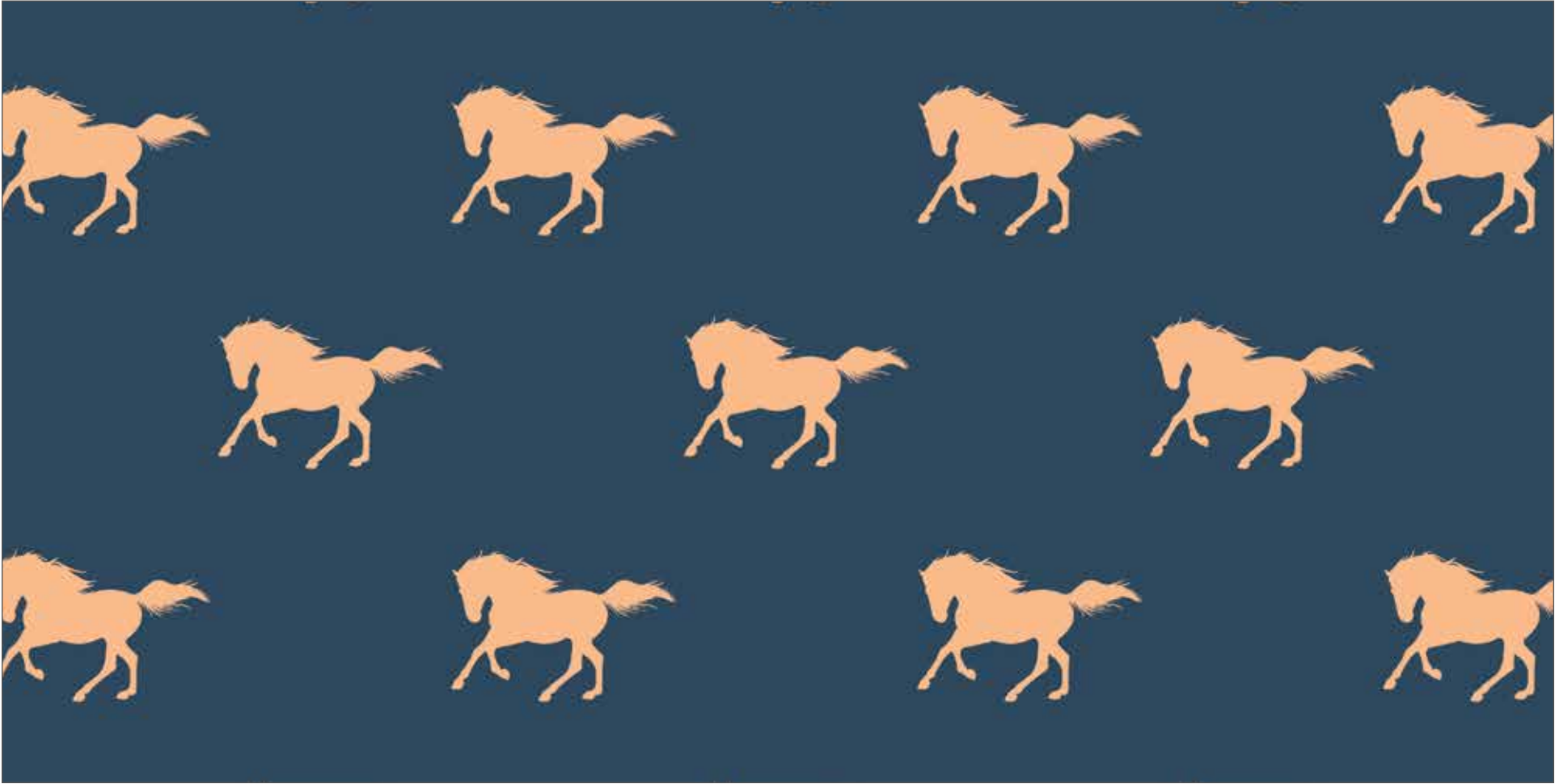


Pre-order the
P143-RADIANCE
Quilt Pattern

* **Approximate** fabric requirements are listed to aid in estimating the amount of yardage to order and are **subject to change**.
The projects portrayed are virtual images. The look of the projects may differ when using actual fabric.
The quilt virtual shown on this page is different than the image shown on the pattern cover.



C13381 Cream Santa Fe Triangles



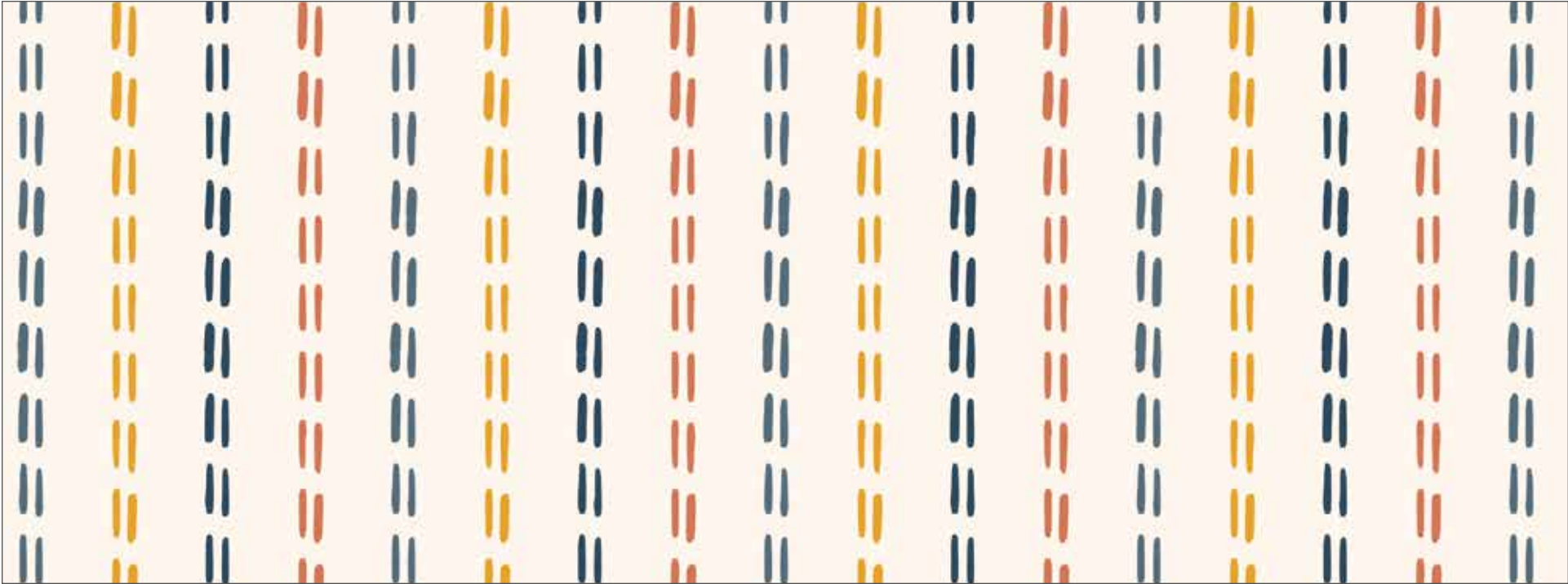
C13382 Navy Santa Fe Mustangs



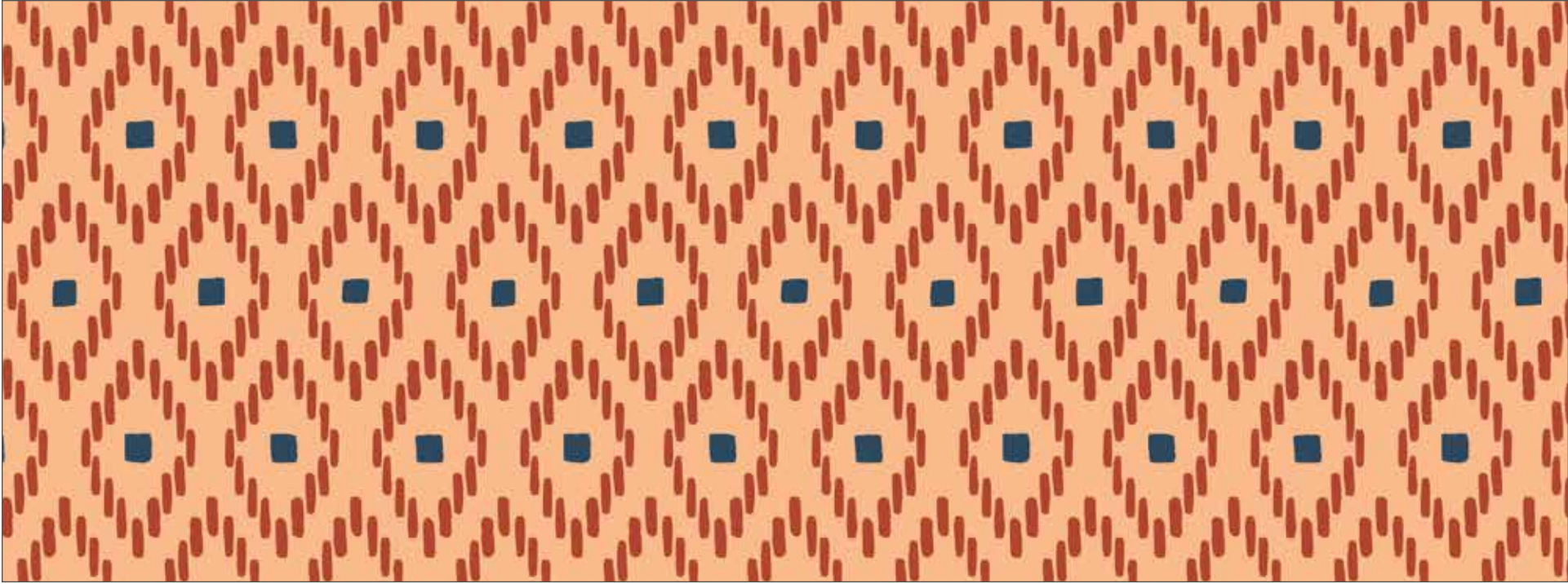
C13383 Rust Santa Fe Motifs



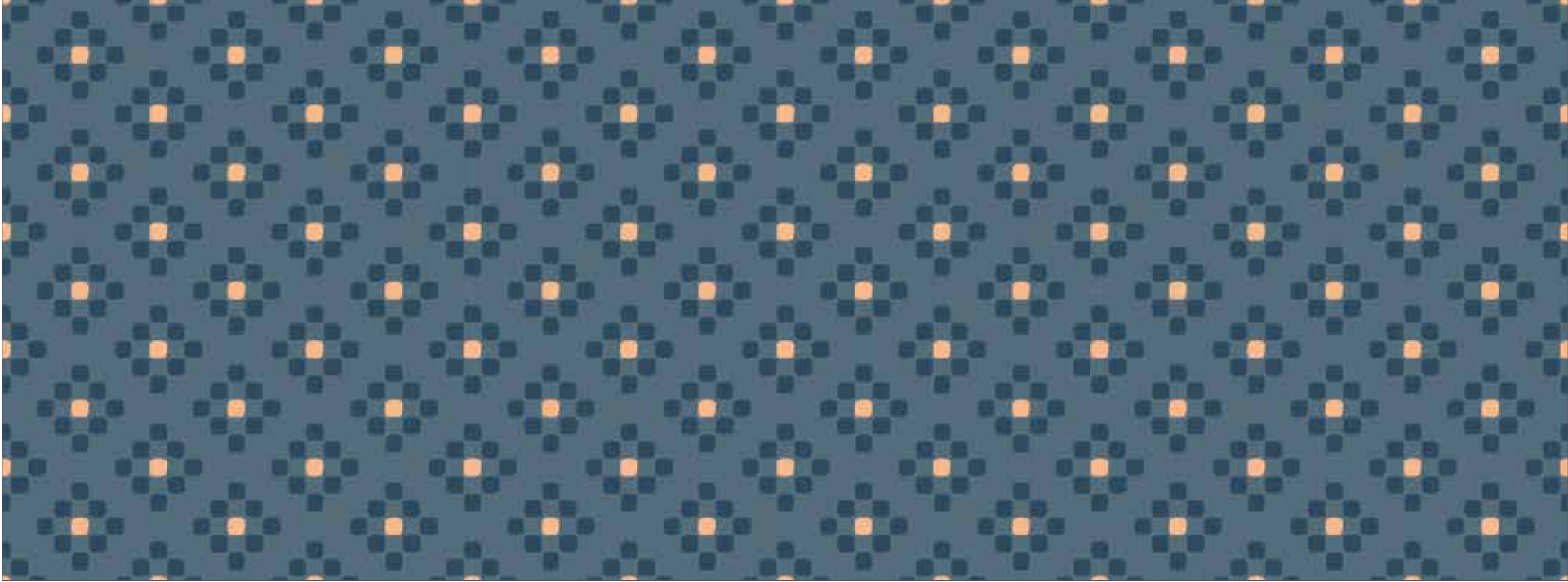
C13384 Navy Santa Fe Chevron



C13385 Cream Santa Fe Stripes



C13386 Sunset Santa Fe Strokes



C13387 Denim Santa Fe Squares



C13380 Terracotta Santa Fe Main

Shown as Repeat 44" x 36"

About the Line



Gabrielle Neil
@gabrielleneildesign

Visit “the city beautiful” with Gabrielle Neil’s newest designer fabric collection, *Santa Fe*. From sunrise to sunset, the color palette in this beautiful southwestern inspired collection will fill your soul creatively and take your quilt, home décor, and apparel projects to new heights. Georgia O’Keeffe once said, “I found I could say things with color and shapes that I couldn’t say any other way – things I had no words for.” Let your quilts do the talking with *Santa Fe*!

PRECUTS

Flat Fold Bundle
25 Yards

FFYD-13380



5-Inch Stacker
42 Pieces



5-13380-42



10-Inch Stacker
42 Pieces



10-13380-42



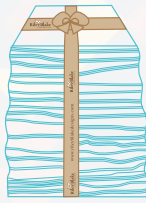
Rolie Polie
40 Pieces



RP-13380-40



Fat Quarter



FQ-13380-24



PRE-ORDER ONLY

ADD ANY LAMINATE WITH 100 YARDS MINIMUM

10-Yard Case Pack

CP10-13380-24



15-Yard Case Pack

CP15-13380-24



Cream - 1 Yard Bundle
8 Pieces

1YD-13380C-8



Navy - 1 Yard Bundle
8 Pieces

1YD-13380N-8



Terracotta - 1 Yard Bundle
8 Pieces

1YD-13380T-8



AVAILABLE JULY 2023 – LAST CALL FEBRUARY 1, 2023

100% FINE COTTON 43/44" WIDE • MACHINE WASH COLD • NO CHLORINE BLEACH • TUMBLE DRY LOW • REMOVE PROMPTLY

Riley Blake Designs • 9646 South 500 West, Sandy, Utah 84070

Toll Free 1.888.768.8454 • Tel 801.816.0540

www.rileyblakedesigns.com

Not intended for children’s sleepwear

©2022 Riley Blake Designs and Gabrielle Neil

MADE IN KOREA