

Spring's in Town

by
Sandy
Gervais



AVAILABLE JANUARY 2024 | R-3
LAST CALL - AUGUST 1, 2023



Sunshine Main



Yellow Floral



Orange Plaid



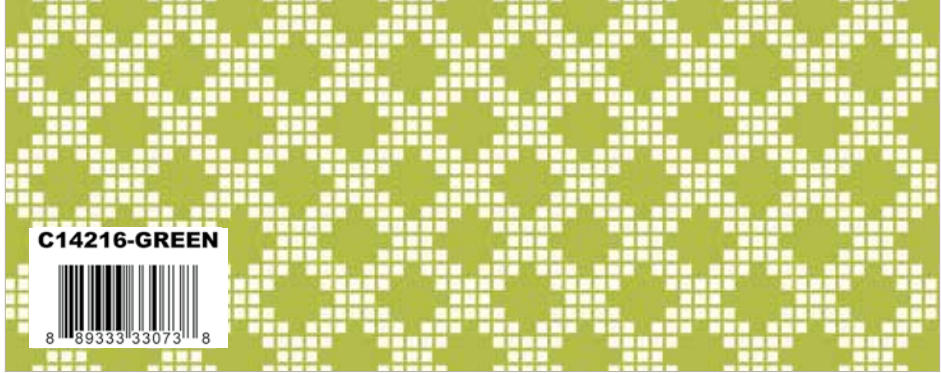
Apricot Bouquets



Cream Flower Toss



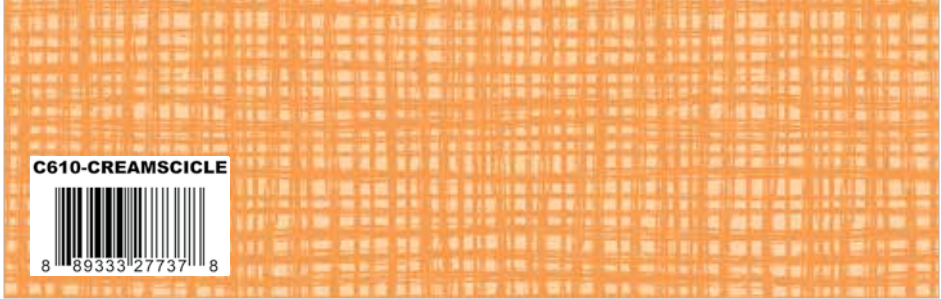
Cream Blossoms



Green Diamonds



Buttercream Texture



Creamsicle Texture



Blush Main



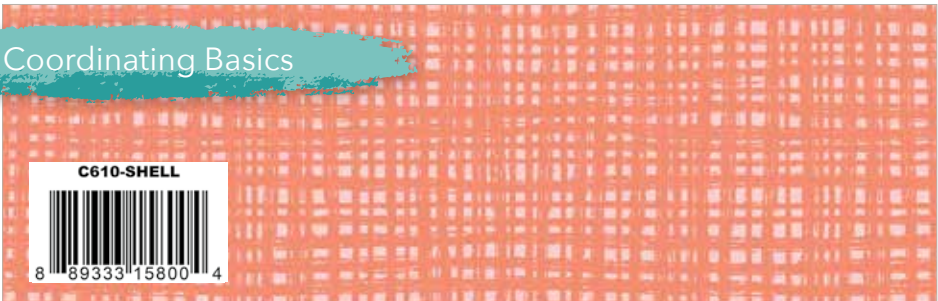
Cream Floral



Blush Bouquets



Coral Blossoms



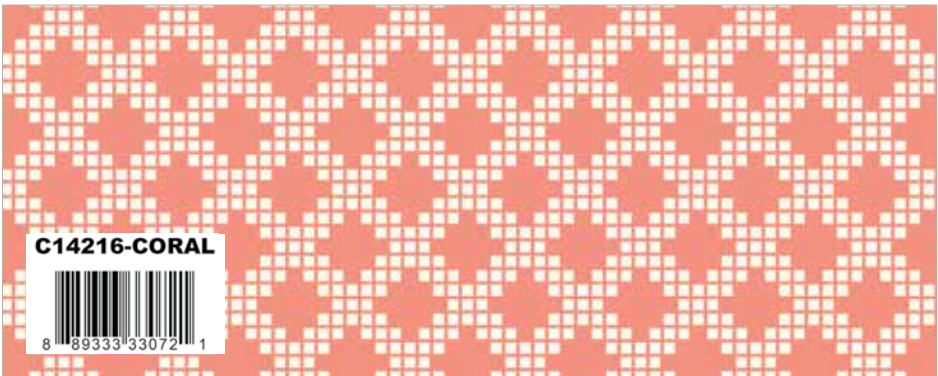
Shell Texture



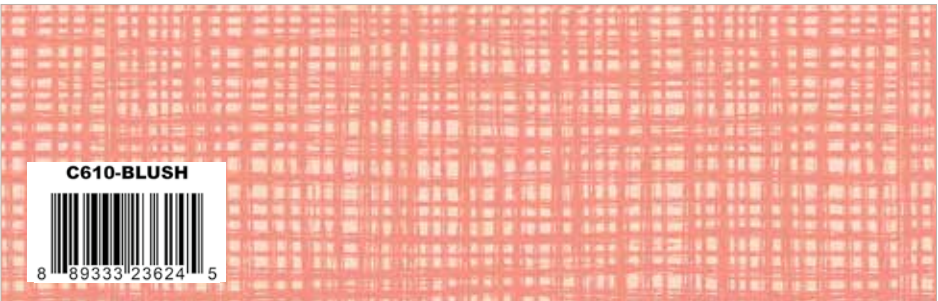
Coral Plaid



Powder Flower Toss



Coral Diamonds



Blush Texture



Cream Main



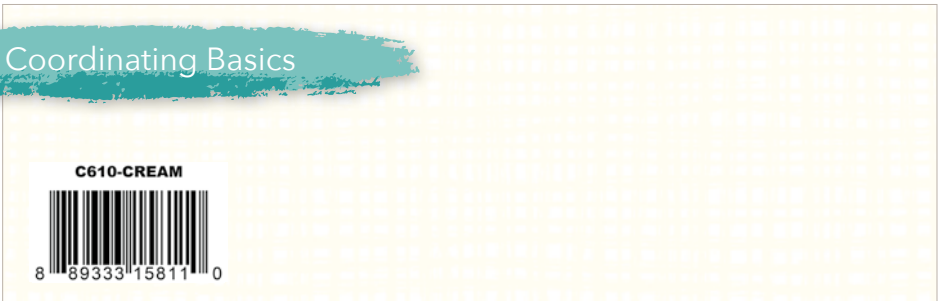
Pewter Floral



Sky Bouquets



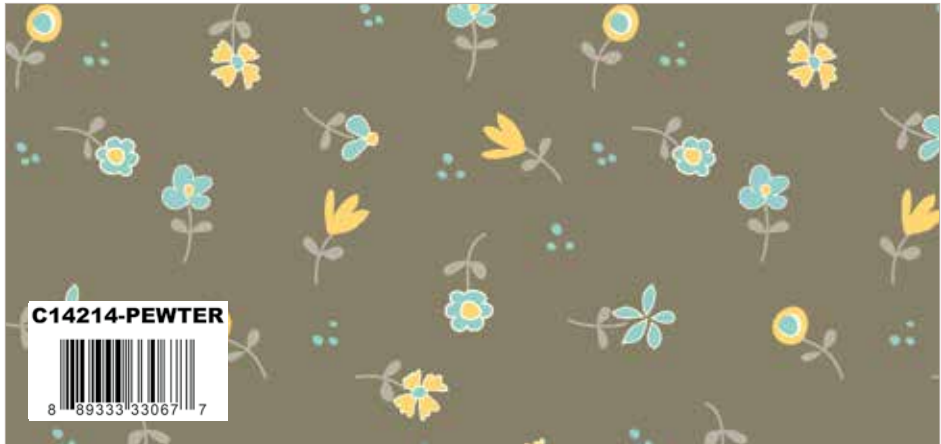
Peacock Blossoms



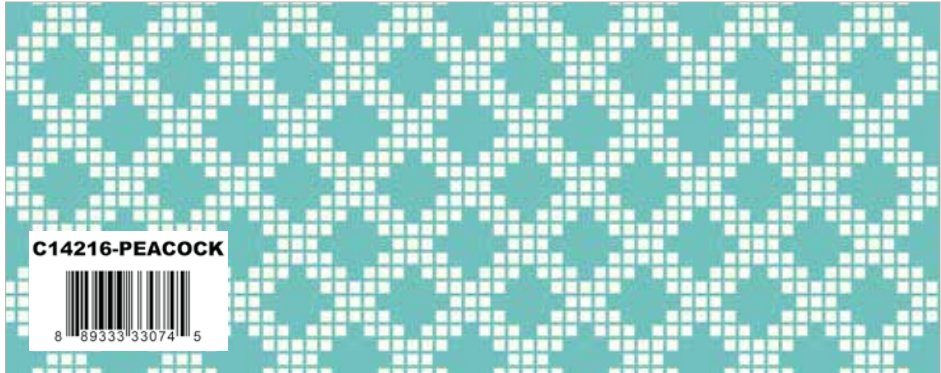
Cream Texture



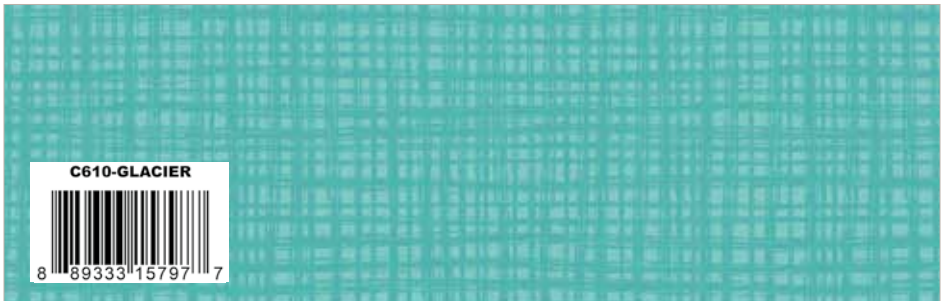
Green Plaid



Pewter Flower Toss

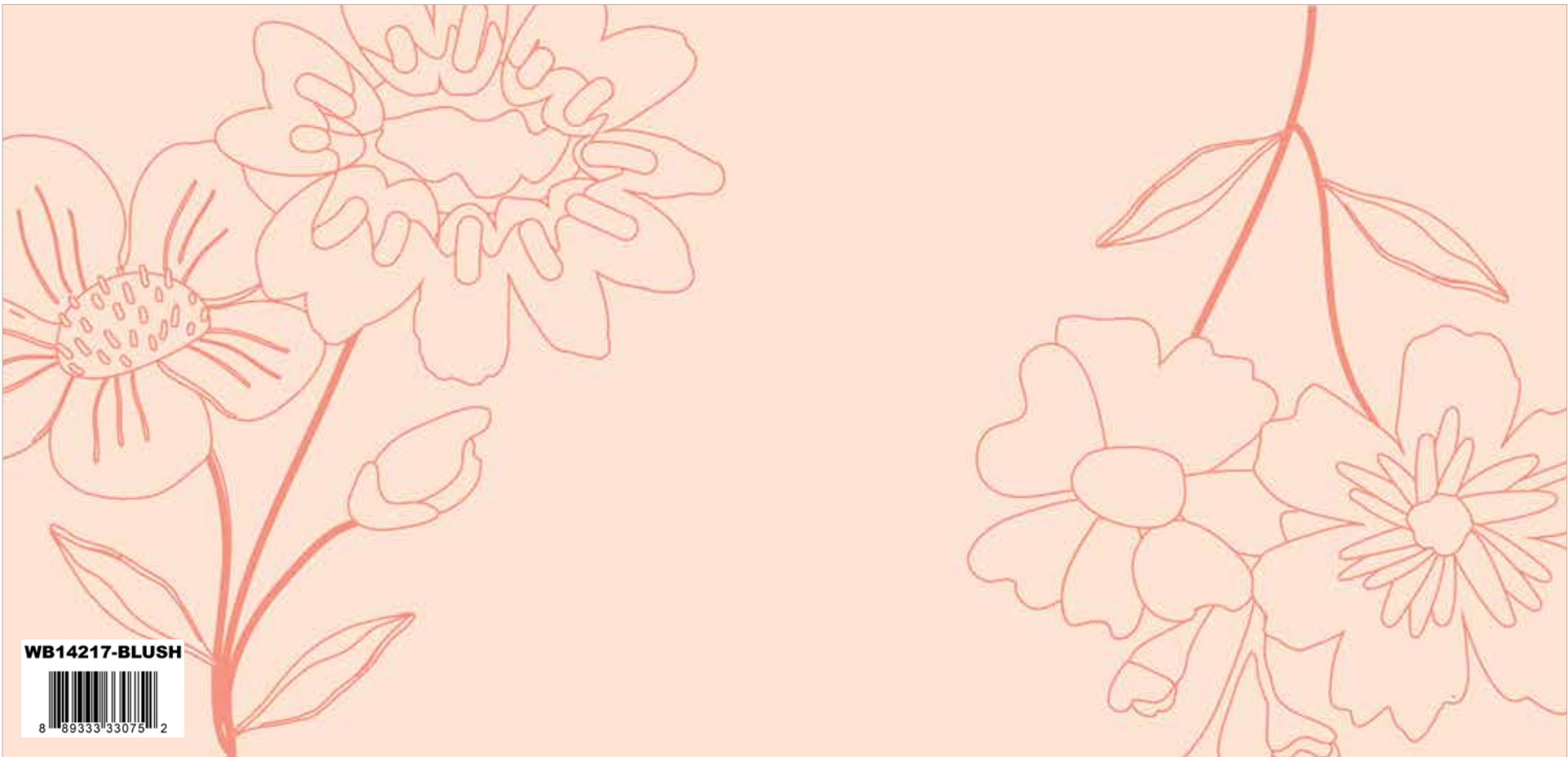


Peacock Diamond

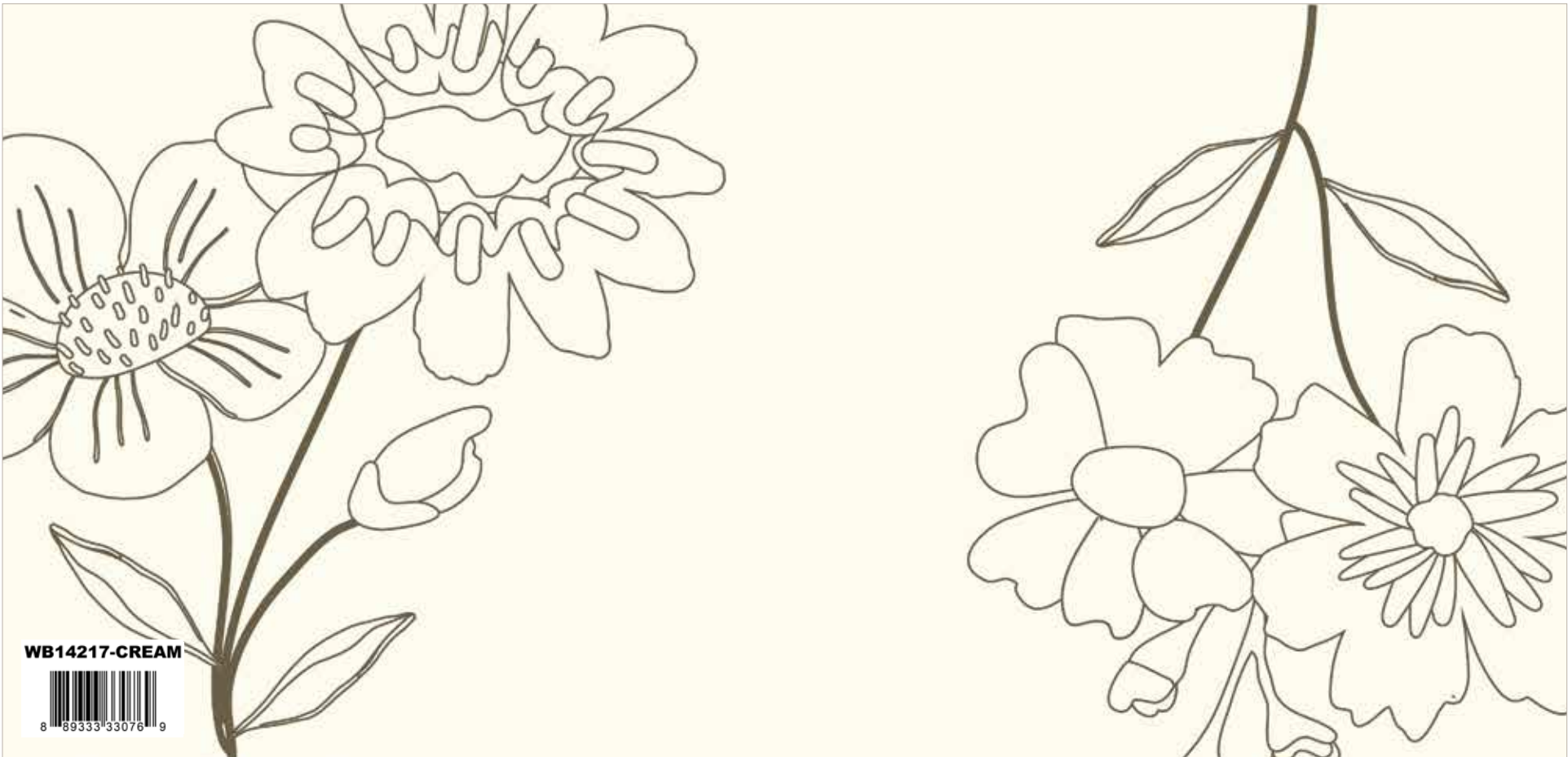


Glacier Texture

Spring’s in Town Wide Backs - 107/108”



Blush Spring's in Town Wide Back



Cream Spring's in Town Wide Back



Peacock Spring's in Town Wide Back

Spring's in Town Panel



Spring's in Town Panel
(10 panels per bolt)
Scaled to 28% | Actual Size is 36" x 43"

Hatchery Hack by Sandy Gervais



10" Stacker
Friendly

Runner Size 19½" x 46½"

Fabric Requirements

- (1) 10-14210-42 Spring’s in Town 10-Inch Stacker
- 3/8 Yard C14214 Pewter Flower Toss (Binding)
- 1 1/2 Yards C610 Cream Texture
- (9) 3/8" Buttons for Eyes

Pre-order the
P157-HATCHERYHACK
Runner Pattern



Box Size
Approx: 6" x 10" x 2½"
(Solid box with printed belly band)

*Kit includes pattern and fabric for
runner top and binding



Pre-order the
Hatchery Hack Runner Kit

Available February 2024

Tulip Toss by Sandy Gervais



Fat Quarter
Friendly

Fabric Requirements

- (1) FQ-14210-21 Spring’s in Town Fat Quarter Bundle
- 2 5/8 Yards C14214 Cream Flower Toss
- 1/4 Yard C14214 Pewter Flower Toss
- 2 1/8 Yards C14216 Green Diamonds (Includes Binding)
- Backing: 2 3/4 Yards *WB14217 Blush Spring’s in Town

Pre-order the
P157-TULIPTOSS
Quilt Pattern



*Wide Back measurement is shown using the best use of fabric
and may not be intended for directional Wide Back fabric.

Quilt Size 87" x 93"

* **Approximate** fabric requirements are listed to aid in estimating the amount of yardage to order and are subject to change.
The projects portrayed are virtual images. The look of the projects may differ when using actual fabric.
The quilt virtual shown on this page may be different than the image shown on the pattern cover.

Mixed Bouquet by Sandy Gervais



Quilt Size 68½" x 83½"

Fabric Requirements

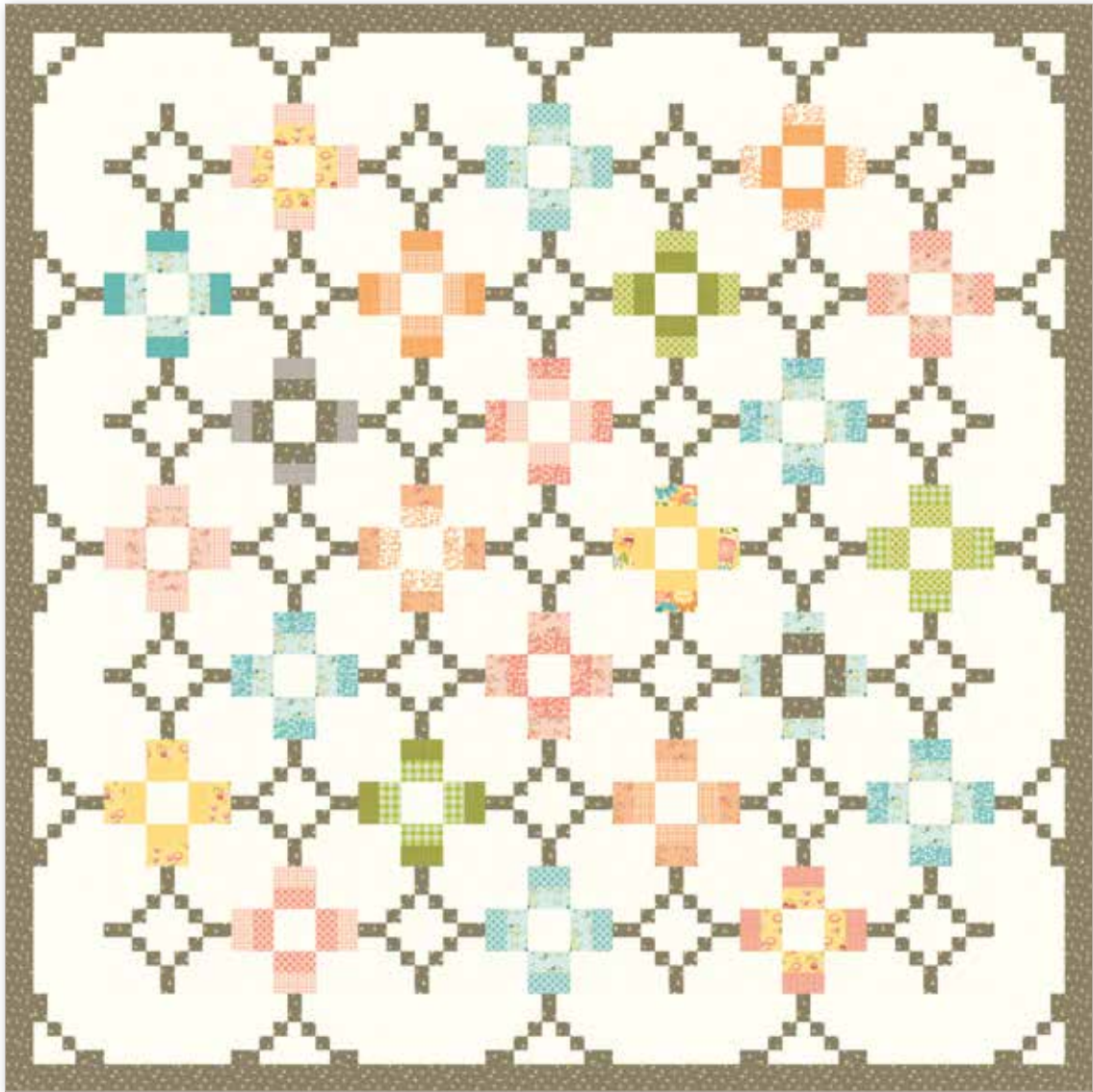
- 1/4 Yard of Each:**
C14211 Yellow Floral
C14212 Coral Plaid
C14212 Green Plaid
C14214 Pewter Flower Toss
- 1/3 Yard of Each:**
C14213 Apricot Bouquets
C14213 Blush Bouquets
C14216 Green Diamonds
-
- 1 1/4 Yards C14210 Sunshine Main
1/8 Yard C14212 Orange Plaid
4 1/2 Yards C14214 Cream Flower Toss
1/8 Yard C14214 Powder Flower Toss
1/2 Yard C14215 Coral Blossoms
1 Yard C14215 Peacock Blossoms
- Backing: 2 1/4 Yards *WB14217 Peacock Spring’s in Town

Pre-order the
P157-MIXEDBOUQUET
Quilt Pattern



*Wide Back measurement is shown using the best use of fabric and may not be intended for directional Wide Back fabric.

Ebb and Flow by Sandy Gervais



Quilt Size 77" x 77"

Fabric Requirements

- 1/8 Yard of Each:**
C14210 Yellow Main
C14211 Yellow Floral
C14212 Coral Plaid
C14212 Green Plaid
C14212 Orange Plaid
C14213 Apricot Bouquets
C14213 Blush Bouquets
C14213 Sky Bouquets
C14214 Powder Flower Toss
C14215 Cream Blossoms
- C14215 Coral Blossoms
C14215 Peacock Blossoms
C14216 Coral Diamonds
C14216 Green Diamonds
C14216 Peacock Diamonds
C610 Asparagus Texture
C610 Blush Texture
C610 Buttercream Texture
C610 Creamsicle Texture
C610 Glacier Texture
C610 Slate Texture
-
- 3 1/2 Yards C610 Cream Texture
2 Yards C14214 Pewter Flower Toss (Includes Binding)
- Backing: 2 1/2 Yards *WB14217 Cream Spring’s in Town



Pre-order the
P157-EBBANDFLOW
Quilt Pattern

*Wide Back measurement is shown using the best use of fabric and may not be intended for directional Wide Back fabric.

* **Approximate** fabric requirements are listed to aid in estimating the amount of yardage to order and are subject to change.
The projects portrayed are virtual images. The look of the projects may differ when using actual fabric.
The quilt virtual shown on this page may be different than the image shown on the pattern cover.



C14210 Sunshine Main

Shown as Repeat 44" x 36"



Sandy Gervais
@gervaisandy

About the Line

Watch your creations bloom with *Spring's in Town* by Sandy Gervais. This gorgeous designer fabric collection features a bouquet of florals in a soothing color palette of blush, apricot, sunshine, powder and peacock. Let's not forget about the adorable panel that features bunnies, chicks, eggs, and so much more in Sandy's imaginative and colorful style - it's eggcellent!

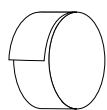
Precuts



FFYD-14210



Flat Fold Bundle
25 Yards



RP-14210-40



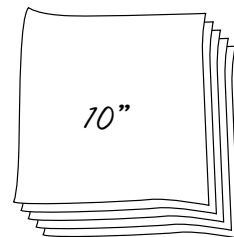
Rolie Polie
40 Pieces



5-14210-42



5-Inch Stacker
42 Pieces



10-14210-42



10-Inch Stacker
42 Pieces



FQ-14210-21



Fat Quarter Bundle
21 Pieces

Pre-Order Only

ADD ANY LAMINATE WITH 100 YARDS MINIMUM
PANEL IS INCLUDED IN CASE PACKS
WIDE BACKS NOT INCLUDED IN CASE PACKS



1YD-14210B-8



Blush - 1-Yard Bundle
8 Pieces



1YD-14210C-8



Cream - 1-Yard Bundle
8 Pieces



1YD-14210S-8



Sunshine - 1-Yard Bundle
8 Pieces

CP10-14210-22



10-Yard Case Pack

CP15-14210-22



15-Yard Case Pack

Available January 2024 Last Call August 1, 2023

100% FINE COTTON 43/44" WIDE • MACHINE WASH COLD • NO CHLORINE BLEACH • TUMBLE DRY LOW • REMOVE PROMPTLY

RILEY BLAKE DESIGNS • 9646 SOUTH 500 WEST, SANDY, UTAH 84070 • TOLL FREE 1.888.768.8454 • TEL 801.816.0540 • WWW.RILEYBLAKEDESIGNS.COM

NOT INTENDED FOR CHILDREN'S SLEEPWEAR

©2023 RILEY BLAKE DESIGNS AND SANDY GERVAIS

MADE IN KOREA