

STORY ANIMALS
THROUGH THE YEAR

DOLL PANEL OF THE MONTH

Jennifer Long
SEW A STORY



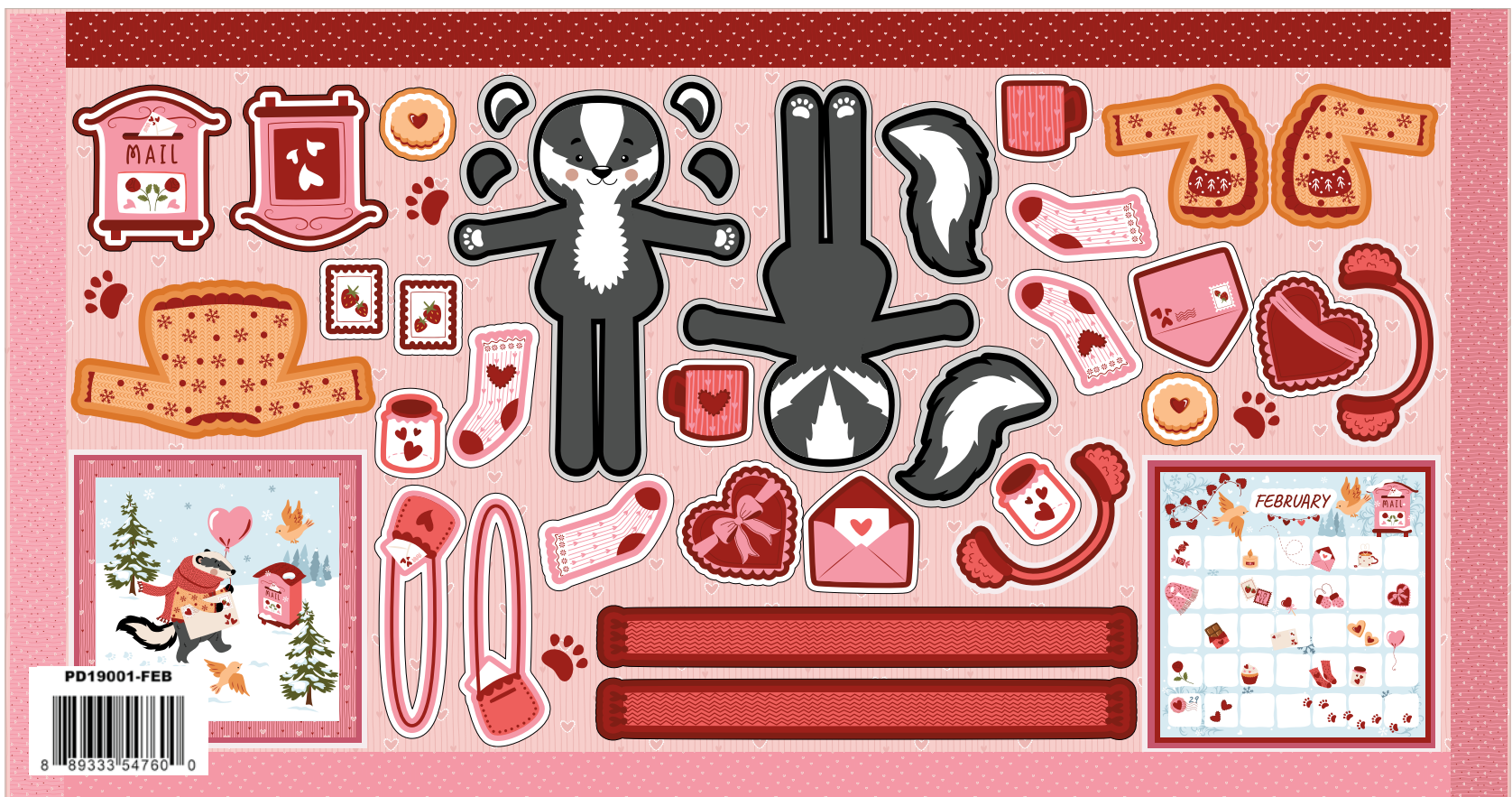
available starting December 2026 | R-3
last call July 1, 2026

Story Animals Through the Year Panels: January, February & March



Story Animals Through the Year January Panel
(10 panels per bolt)

Scaled to 15% | Actual Size is 57" x 36½"



Story Animals Through the Year February Panel
(10 panels per bolt)

Scaled to 15% | Actual Size is 57" x 36½"



Story Animals Through the Year March Panel
(10 panels per bolt)

Scaled to 15% | Actual Size is 57" x 36½"

Story Animals Through the Year Panels: July, August & September



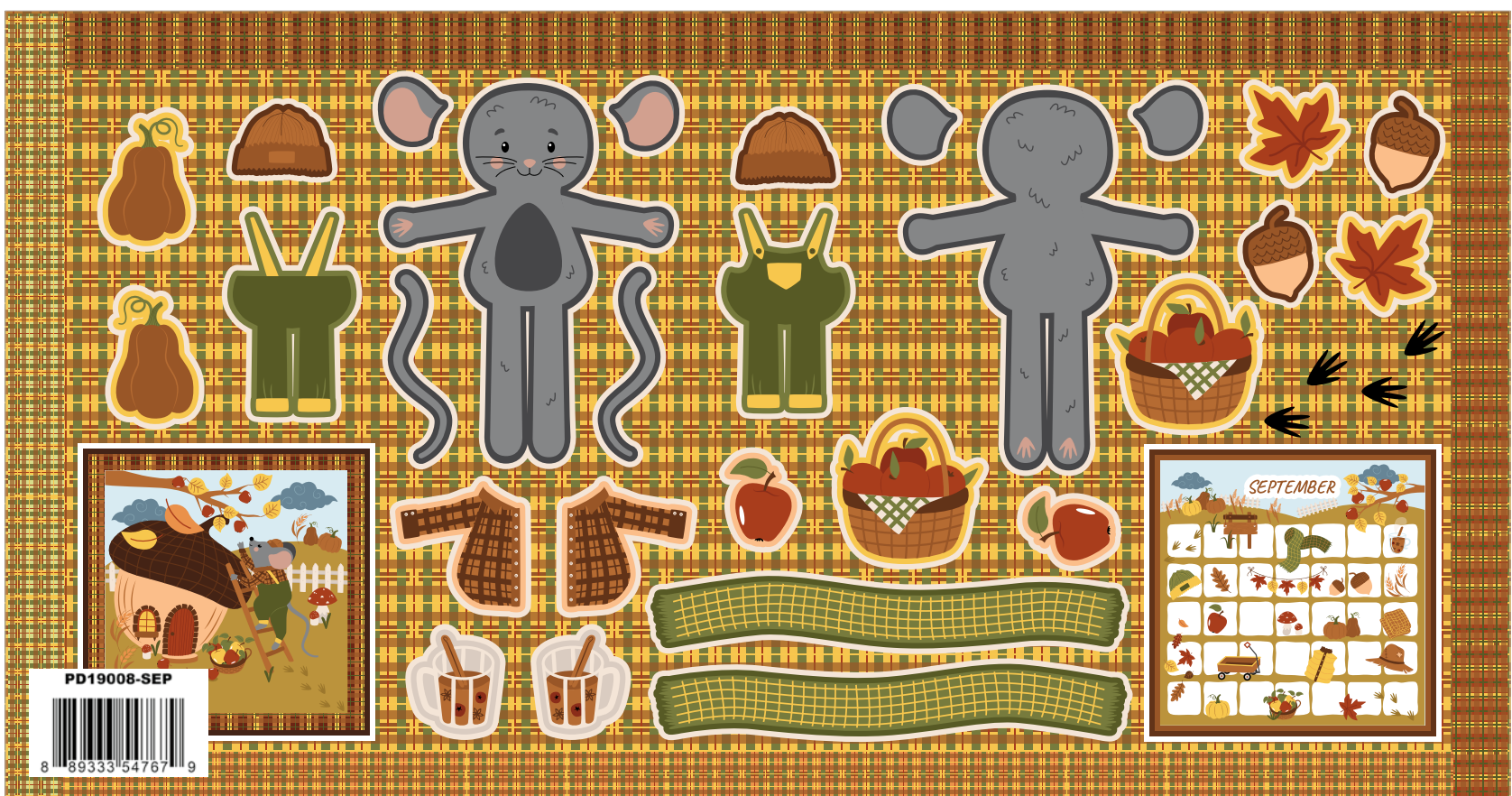
Story Animals Through the Year July Panel
(10 panels per bolt)

Scaled to 15% | Actual Size is 57" x 36½"



Story Animals Through the Year August Panel
(10 panels per bolt)

Scaled to 15% | Actual Size is 57" x 36½"



Story Animals Through the Year September Panel
(10 panels per bolt)

Scaled to 15% | Actual Size is 57" x 36½"

Story Animals Through the Year is designed to be simple for shops to carry and easy for customers to love. Shops can run it as a Doll of the Month club or sell panels individually, and every month is supported online through sewastory.com with videos and community led by Jennifer Long. The collectible format encourages repeat visits, and end-of-year free projects (a calendar quilt using two panels, plus an optional flip book with a third) give customers a clear reason to purchase extra panels.



Calendar Quilt Size 63" x 83" (Final quilt design may change)



The promise to your customers

Every month features a new Story Animal Doll enjoying the season, with clothing and weather themes that naturally teach children about the year in a fun, family-friendly way. Every release is supported with videos and community hosted on sewastory.com and taught by Jennifer Long, professional doll maker and designer.

What customers receive each month

Each month's panel features:

- A Story Animal Doll for the season
- A little friend for each Story Animal Doll
- Weather appropriate clothing and accessories that fit the monthly theme
- A coordinating doll quilt
 - Front: the doll and little friend doing the weather activity (the picture scene)
 - Back: an open-ended calendar where families can embroider meaningful dates like birthdays and holidays
- A four sectioned border that frames every panel, designed for an optional ruffle on the Doll Quilt or used in piecing the bonus Free Pattern Calendar Quilt.

Story Animals Through the Year by Jennifer Long
 available starting Dec. 2026 **last call July 1, 2026**

100% FINE COTTON · 57" WIDE · MADE IN KOREA

Machine Wash Cold
 No Chlorine Bleach
 Tumble Dry Low
 Remove Promptly
 Not Intended for Children's Sleepwear

The projects portrayed are virtual images. The look of the projects may differ with actual fabric.