



# Sweetbriar

By Rachel Erickson



AVAILABLE NOVEMBER 2023 | R-2  
LAST CALL - JUNE 1, 2023





Dusk Main



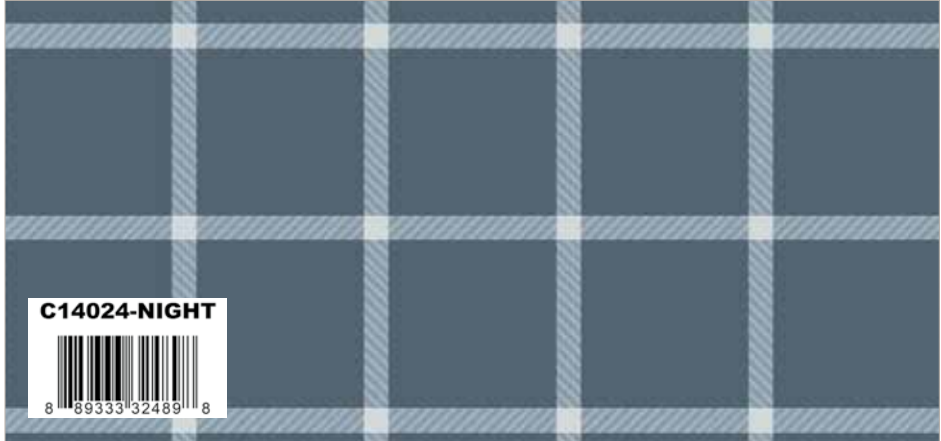
Night Moth Damask



Dusk Fields



Paprika Apples



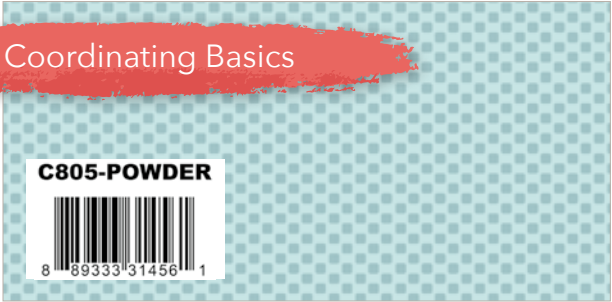
Night Plaid



Cream Bitty Flowers



Blue Flower Scatter



Powder lil' POP!



Vintage Blue Shades



Stargazer Dapple Dot





Blush Main



Wine Moth Damask



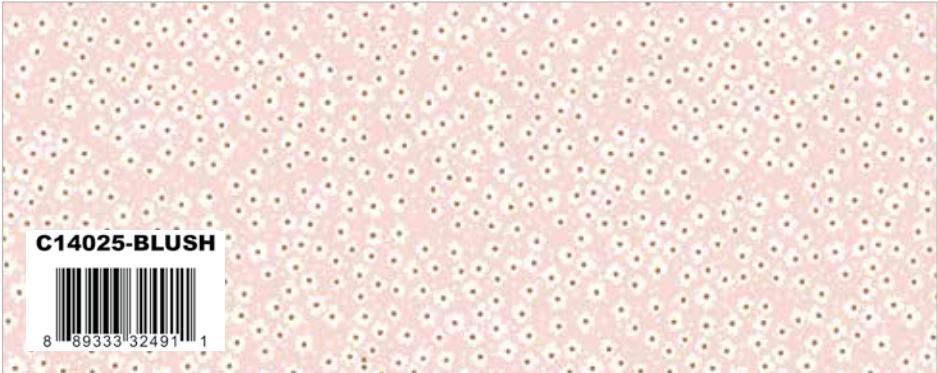
Cream Fields



Wine Apples



Pink Plaid



Blush Bitty Flowers



Paprika Flower Scatter



Tutu Shabby



Coral lil' POP!



Marsala Dapple Dot





Cream Main



Cream Moth Damask



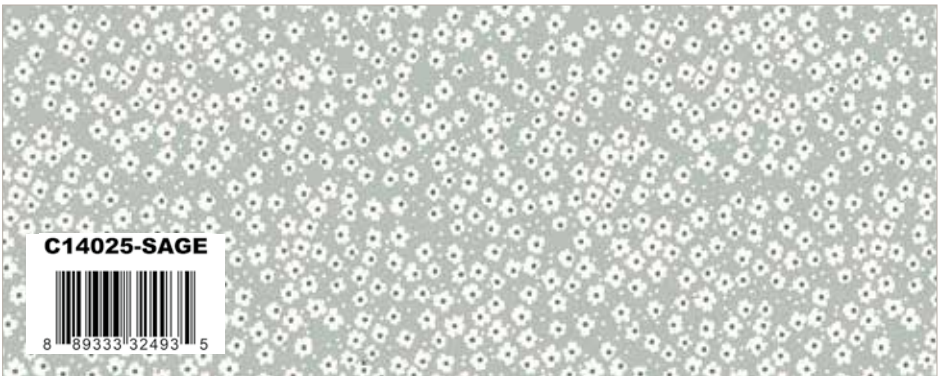
Sage Fields



Peaches 'n Cream Apples



Cream Plaid



Sage Bitty Flowers



Peaches 'n Cream Flower Scatter



Brick lil' POP!



Peaches 'n Cream Blossom



Lodge Pole Sparkler



Orienteer Multicolor and Duotone Quilts by Chelsey Cobabe



Quilt Size 78" x 78"

Fabric Requirements

Orienteer Multicolor

- 1/2 Yard C14020 Blush Main
- 1/3 Yard C14020 Cream Main
- 1/3 Yard C14020 Dusk Main
- 1/3 Yard C14021 Cream Moth Damask
- 1/3 Yard C14021 Night Moth Damask
- 1/3 Yard C14021 Wine Moth Damask
- 1/3 Yard C14022 Cream Fields
- 2/3 Yard C14022 Dusk Fields
- 1/3 Yard C14022 Sage Fields
- 1/3 Yard C14023 Paprika Apples
- 1/3 Yard C14023 Peaches ‘n Cream Apples
- 1/3 Yard C14023 Wine Apples
- 1/3 Yard C14024 Cream Plaid
- 1/2 Yard C14024 Night Plaid
- 1/2 Yard C14024 Pink Plaid
- 1/4 Yard C14025 Blush Bitty Flowers
- 1/4 Yard C14025 Cream Bitty Flowers
- 1/2 Yard C14025 Sage Bitty Flowers
- 1/3 Yard C14026 Blue Flower Scatter
- 1/3 Yard C14026 Paprika Flower Scatter
- 1/3 Yard C14026 Peaches ‘n Cream Flower Scatter
- 1 Yard C120 Latte Solid
- 1 3/4 Yards C120 Le Creme Solid
- 1/4 Yard C120 Peony Solid
- 1 1/4 Yards C120 Wine Solid (Includes Binding)



Quilt Size 78" x 78"

Fabric Requirements

Orienteer Duotone

- 3/4 Yard C14021 Cream Moth Damask
- 1/2 Yard C14022 Cream Fields
- 1 Yard C14023 Paprika Apples
- 1 Yard C14023 Peaches ‘n Cream Apples
- 1 Yard C14024 Cream Plaid
- 1 Yard C14024 Night Plaid (Includes Binding)
- 1/2 Yard C14025 Blush Bitty Flowers
- 1/4 Yard C14025 Cream Bitty Flowers
- 1/2 Yard C14026 Paprika Flower Scatter
- 1/2 Yard C14026 Peaches ‘n Cream Flower Scatter
- 1 Yard C120 Latte Solid
- 1 3/4 Yards C120 Le Creme Solid



Pre-order the  
P192-ORIENTEER  
Quilt Pattern

\* **Approximate** fabric requirements are listed to aid in estimating the amount of yardage to order and are subject to change.  
The projects portrayed are virtual images. The look of the projects may differ when using actual fabric.  
The quilt virtual shown on this page may be different than the image shown on the pattern cover.



Sundown in the Garden by The RBD Designers



Quilt Size 61" x 73"

Fabric Requirements

- 1 FQ-14020-21 Sweetbriar Fat Quarter Bundle
- 1 1/2 Yards C14020 Blush Main
- 7/8 Yard C14023 Wine Apples (Includes Binding)
- 1 Yard C14024 Cream Plaid
- 1 5/8 Yards C120 Le Creme Solid

Free Pattern will be available at:  
[www.rileyblakedesigns.com/free-quilt-patterns](http://www.rileyblakedesigns.com/free-quilt-patterns)

\* **Approximate** fabric requirements are listed to aid in estimating the amount of yardage to order and are subject to change. The projects portrayed are virtual images. The look of the projects may differ when using actual fabric. The quilt virtual shown on this page may be different than the image shown on the pattern cover.





C14021 Night Moth Damask

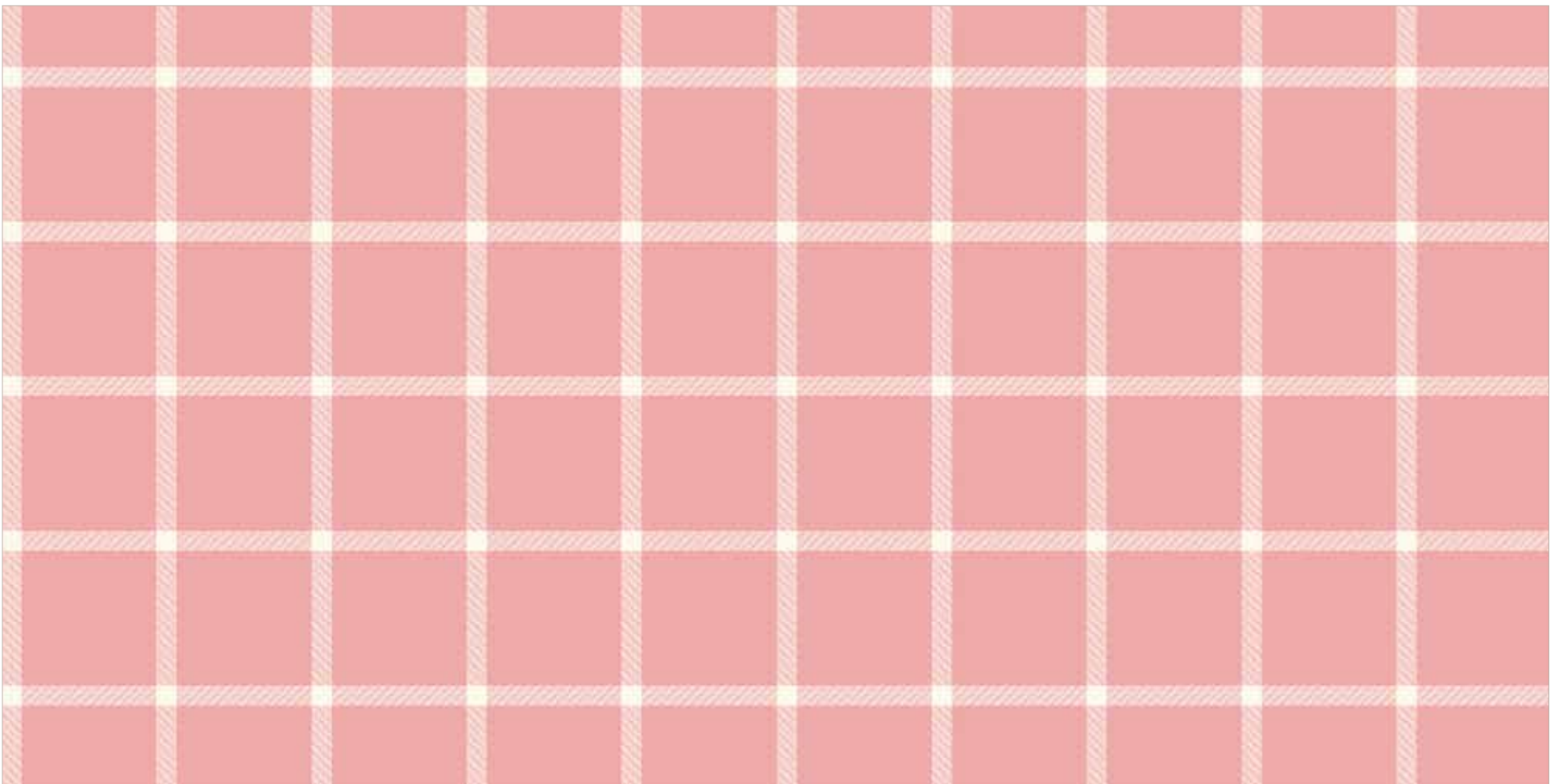


C14022 Dusk Fields

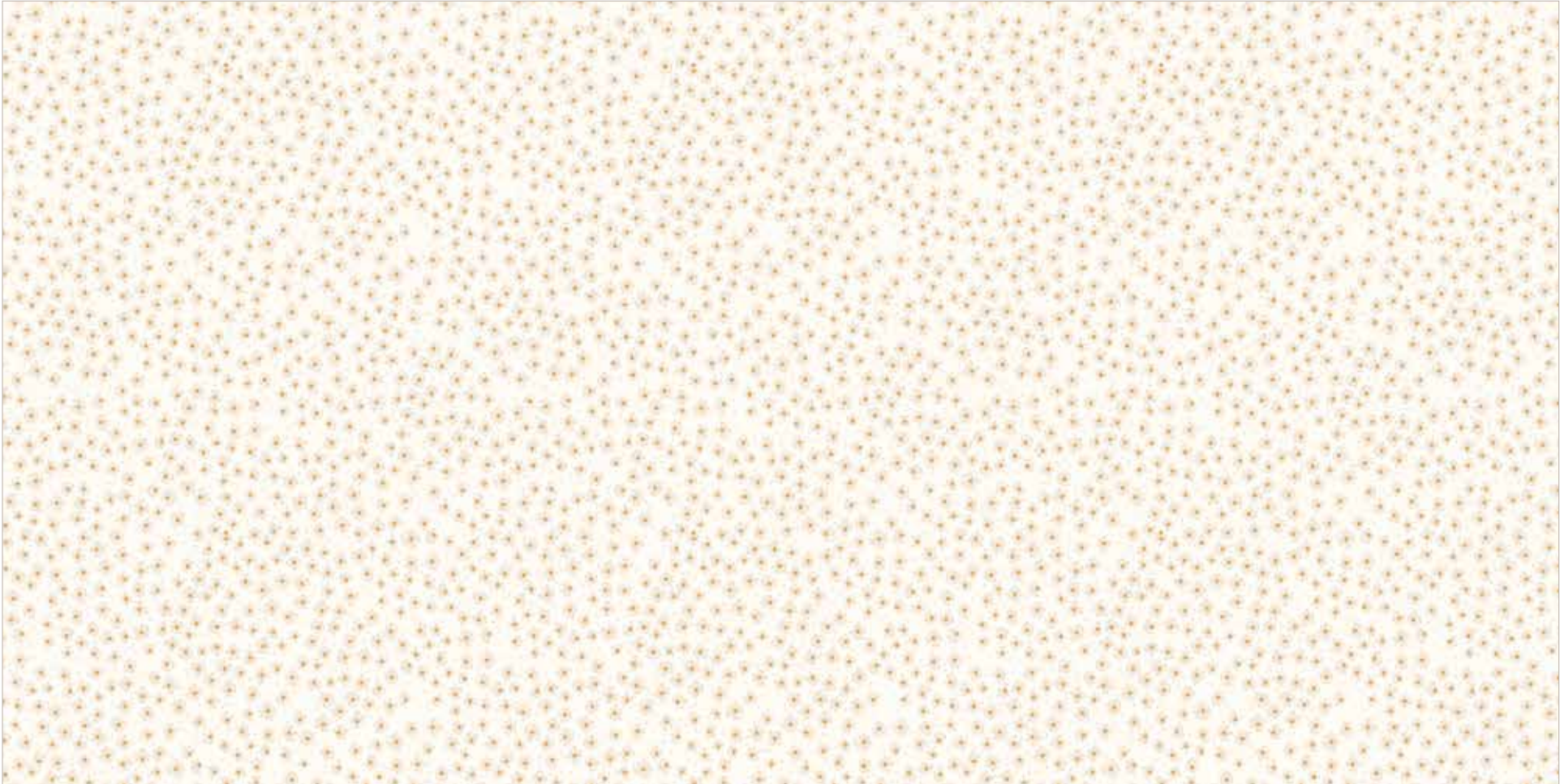


C14023 Paprika Apples





C14024 Pink Plaid



C14025 Cream Bitty Flowers



C14026 Blue Flower Scatter





C14020 Blush Main

Shown as Repeat 44" x 36"





## About the Line

In September 2022, my daughter decided that the only gift she wanted for Christmas was to redo her bedroom and started to obsessively plan. For months I was forced to look through endless Pinterest ideas of teen bedrooms in mint, coral, gold, and sage. She claimed coral was her favorite color and insisted that she always loved coral even though she wanted nothing to do with the coral-heavy fabrics in my previous *New Dawn* collection. When it came time to design a new collection, I found myself turning to these same colors that we had been looking at for so long. I took patterns from a failed black and white fabric collection idea and added these colors. Bam! The failed black and white prints instantly came to life. It even won over my daughter and she can't wait to sew a new quilt for her new room with the collection.

Rachel Erickson  
@citrusandmintdesigns

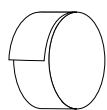
## Precuts



**FFYD-14020**



Flat Fold Bundle  
25 Yards



**RP-14020-40**



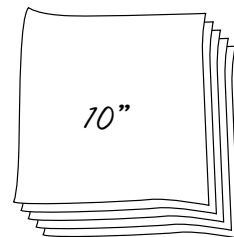
Rolie Polie  
40 Pieces



**5-14020-42**



5-Inch Stacker  
42 Pieces



**10-14020-42**



10-Inch Stacker  
42 Pieces



**FQ-14020-21**



Fat Quarter Bundle  
21 Pieces

## Pre-Order Only

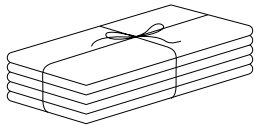
ADD ANY LAMINATE WITH 100 YARDS MINIMUM



**1YD-14020B-7**



Blush - 1-Yard Bundle  
7 Pieces



**1YD-14020C-7**



Cream - 1-Yard Bundle  
7 Pieces



**1YD-14020D-7**



Dusk - 1-Yard Bundle  
7 Pieces

**CP10-14020-21**



10-Yard Case Pack

**CP15-14020-21**



15-Yard Case Pack

Available November 2023 Last Call June 1, 2023

100% FINE COTTON 43/44" WIDE • MACHINE WASH COLD • NO CHLORINE BLEACH • TUMBLE DRY LOW • REMOVE PROMPTLY

RILEY BLAKE DESIGNS • 9646 SOUTH 500 WEST, SANDY, UTAH 84070 • TOLL FREE 1.888.768.8454 • TEL 801.816.0540 • WWW.RILEYBLAKEDESIGNS.COM

NOT INTENDED FOR CHILDREN'S SLEEPWEAR

©2023 RILEY BLAKE DESIGNS AND RACHEL ERICKSON

MADE IN KOREA