

The cover features a central white rectangular box containing the title. The background is a dense floral pattern with large white and pink flowers on a dark background. The top and bottom borders are decorated with repeating floral motifs in red and gold. The bottom right corner has a dark grey diagonal banner with white text.

LIBERTY

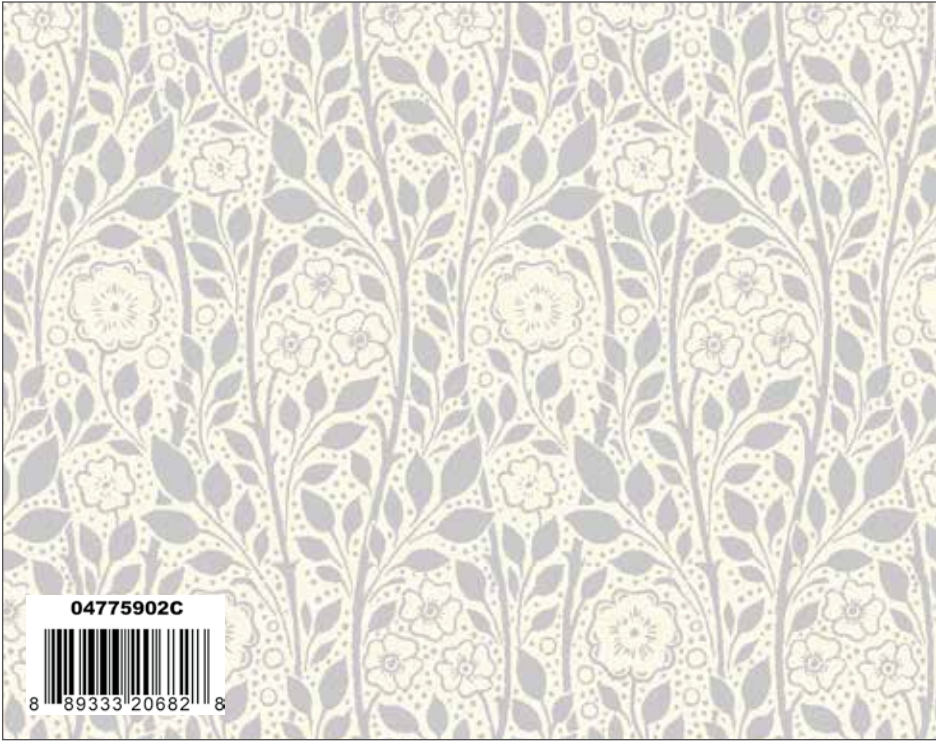
FABRICS

The Emporium Collection

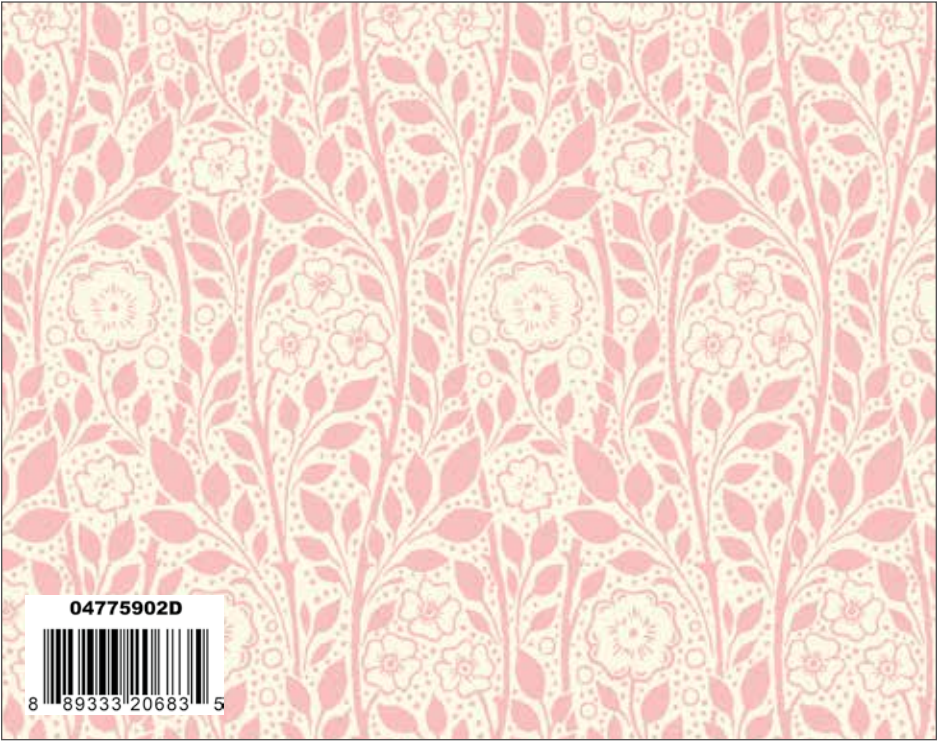
AVAILABLE
JANUARY 2021
R-4



Wild Bloom C



Merton Rose C



Merton Rose D



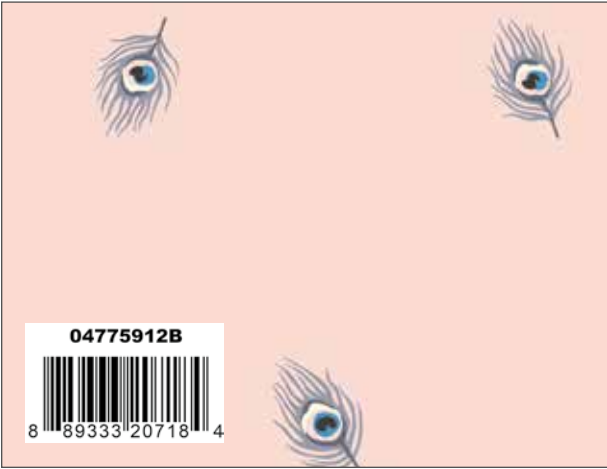
Argyll Tile C



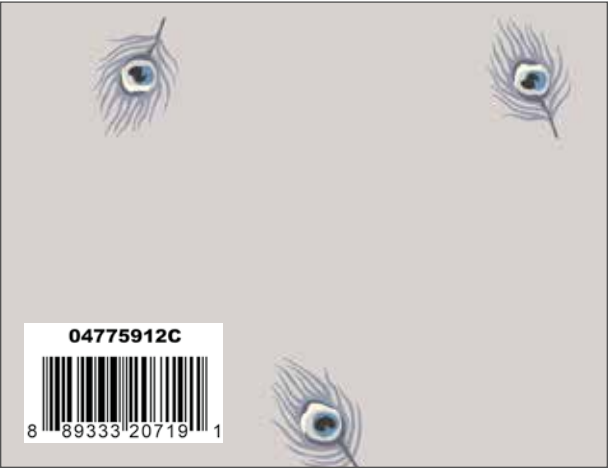
Kyoto Posey D



Palmeria C



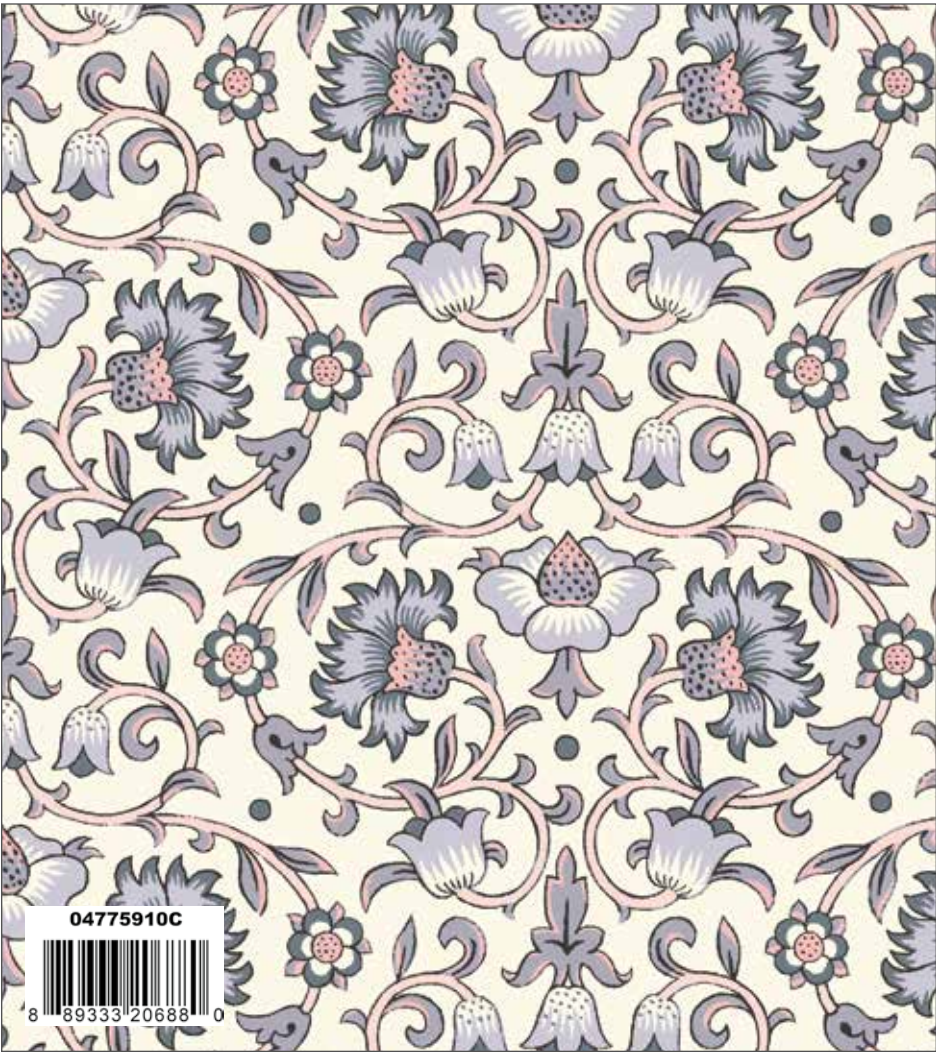
Java Feather B



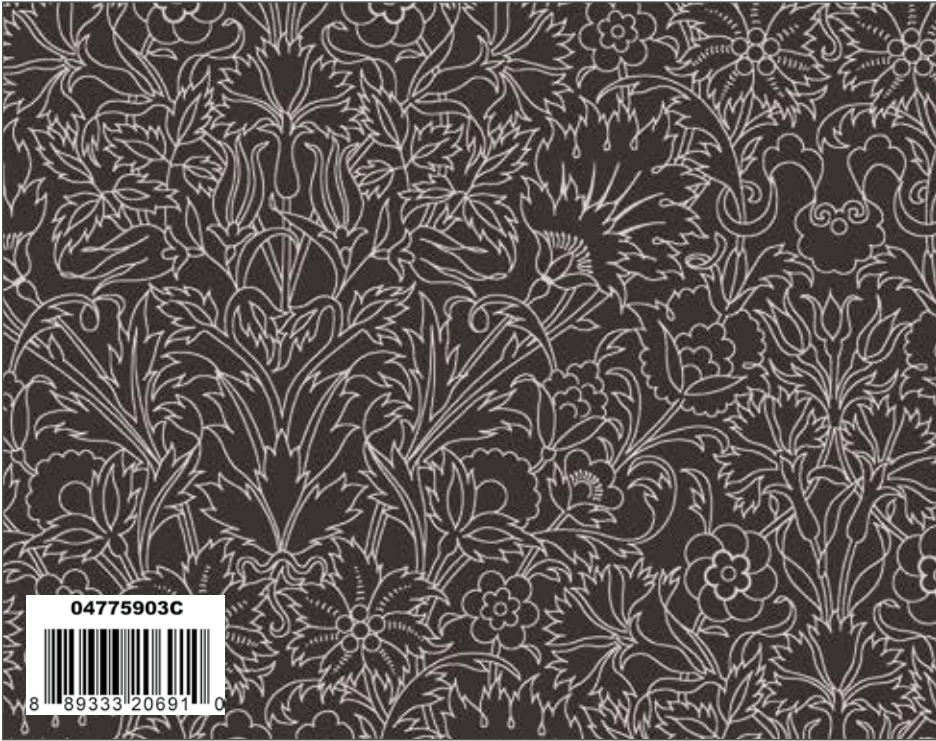
Java Feather C



Regent Rose C



Culodden Vine C



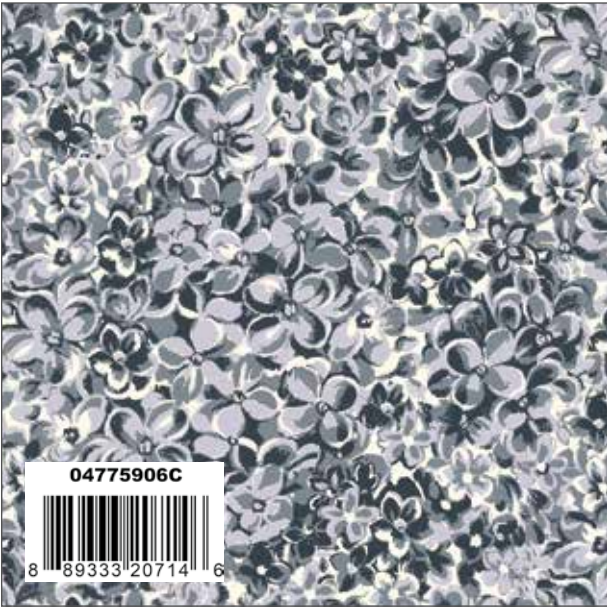
Turner C



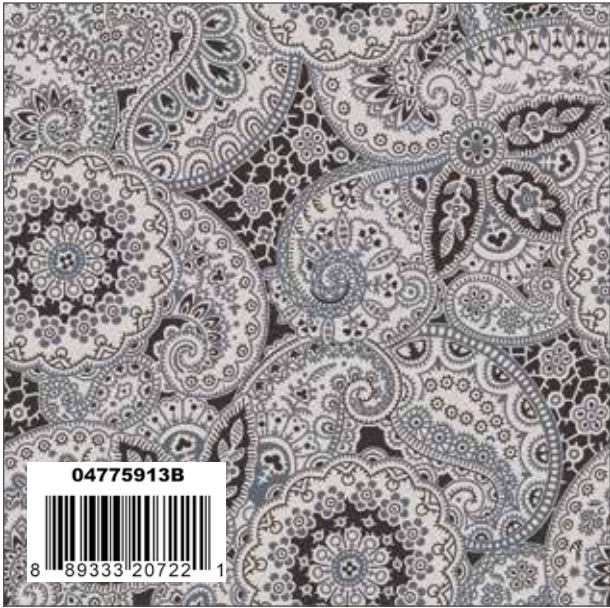
Merchant's Tree D



Kingly Sprig C



Osaka Blossom C



Paisley Meadow B

COLLECTION 1 PRECUTS

5-Inch Stacker
42 Pieces



5-04775910-1-42



10-Inch Stacker
42 Pieces



10-04775910-1-42



Rolie Polie
40 Pieces



RP-04775910-1-40



Fat Quarter



FQ-04775910-1-15



1 Yard Bundle
15 Pieces

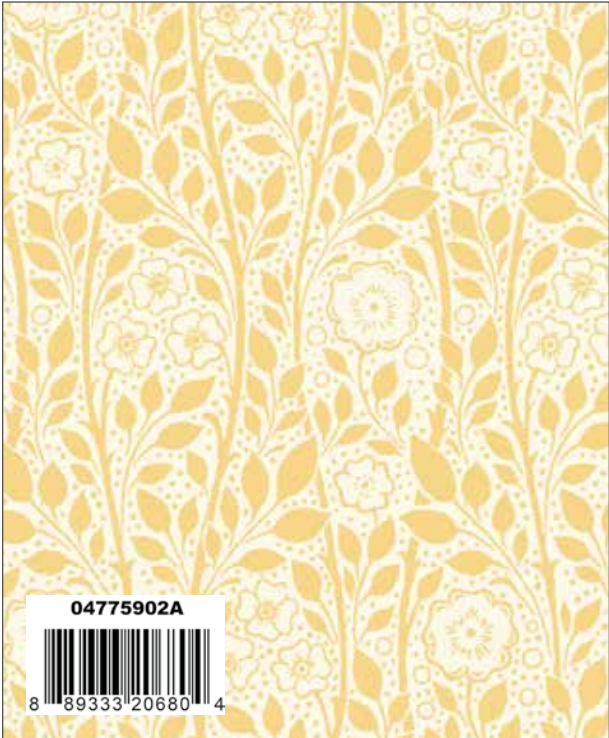


1YD-04775910-1-15

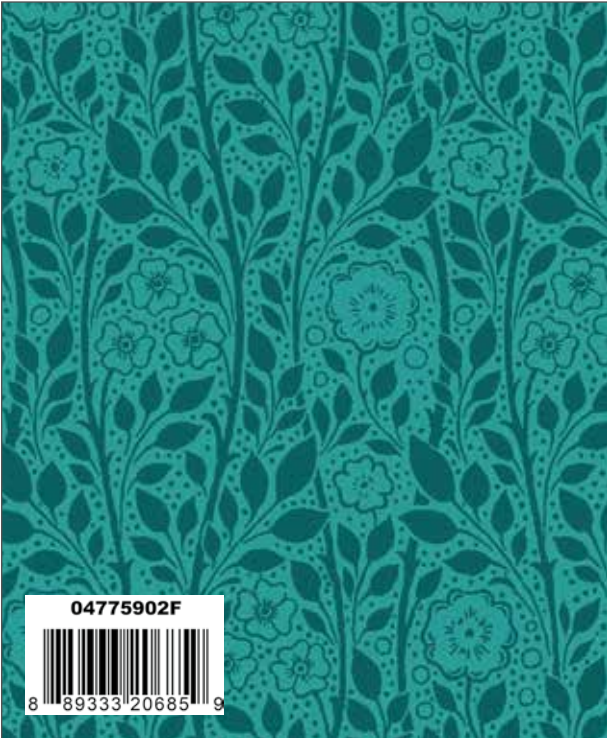




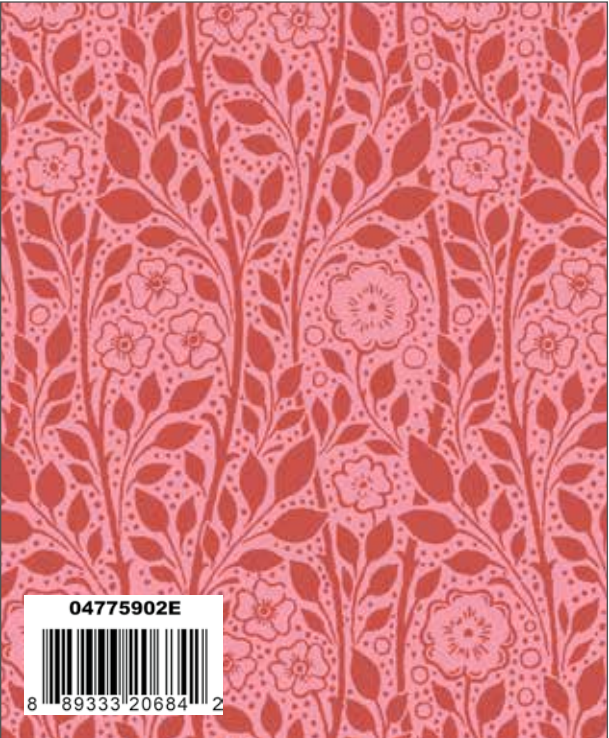
Wild Bloom A



Merton Rose A



Merton Rose F



Merton Rose E



Argyll Tile A



Kyoto Posey A



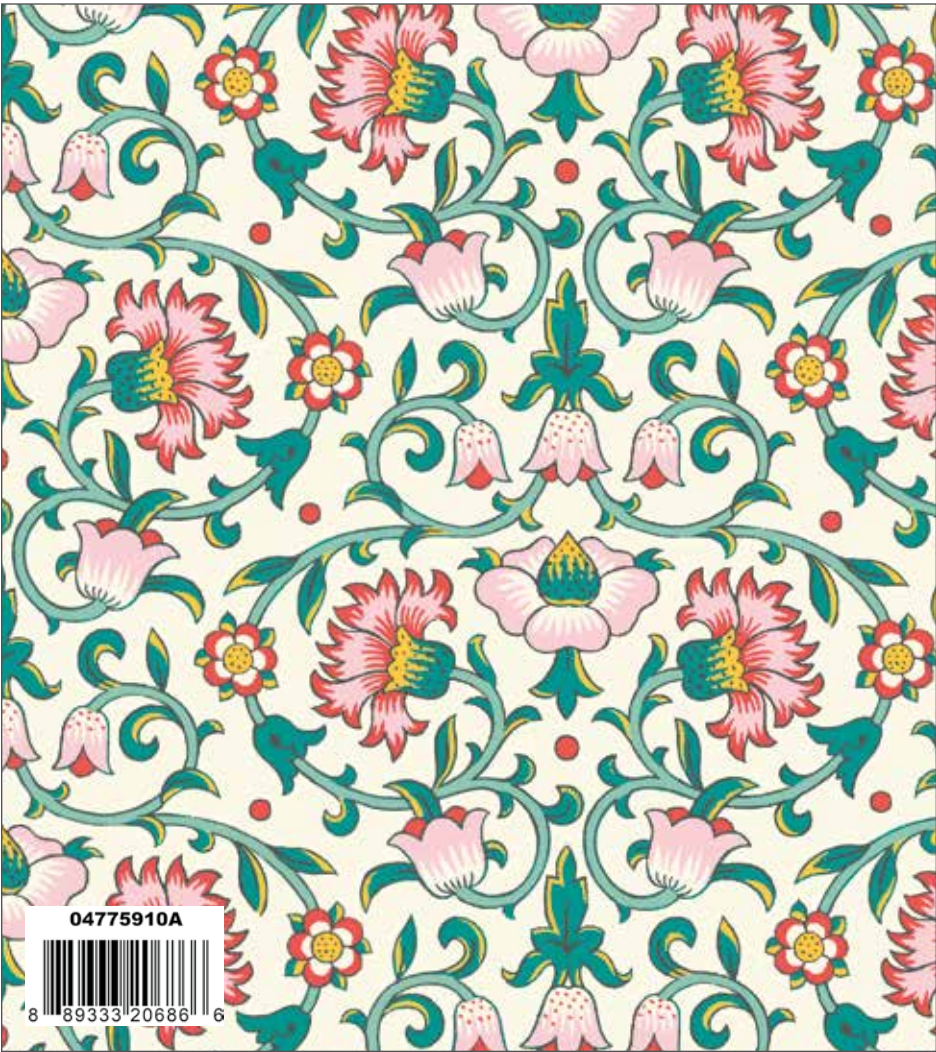
Palmeria A



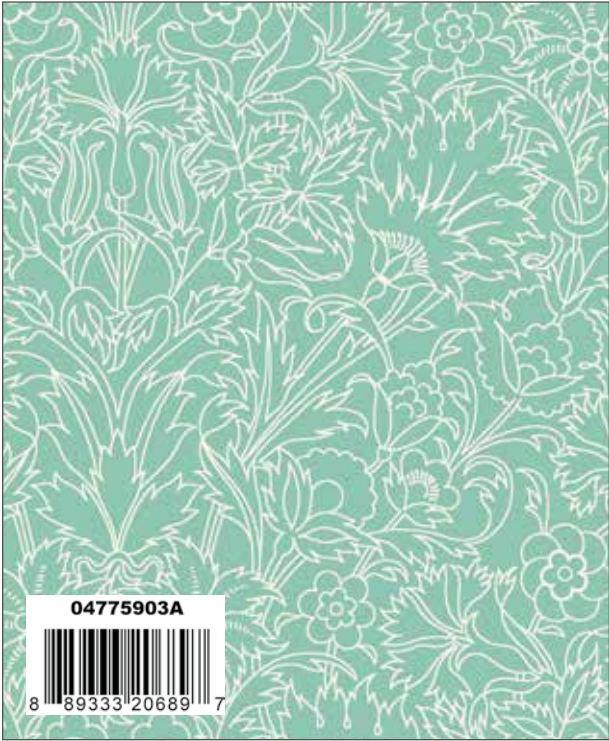
Daisy Bazaar A



Regent Rose A



Culodden Vine A



Turner A



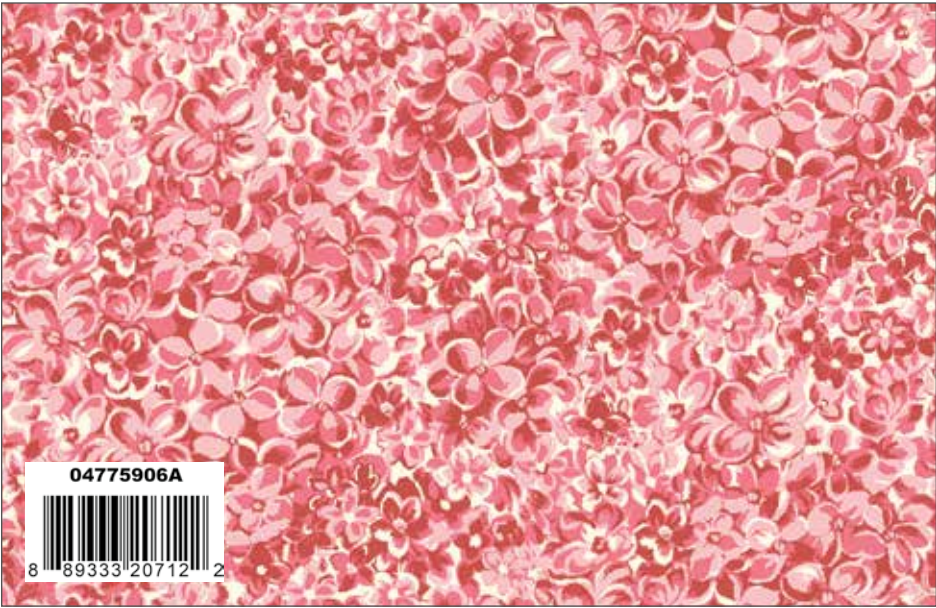
Merchant's Tree B



Merchant's Tree A



Kingly Sprig A



Osaka Blossom A

COLLECTION 2 PRECUTS

5-Inch Stacker
42 Pieces



5-04775910-2-42



10-Inch Stacker
42 Pieces



10-04775910-2-42



Rolie Polie
40 Pieces



RP-04775910-2-40



Fat Quarter



FQ-04775910-2-15



1 Yard Bundle
15 Pieces

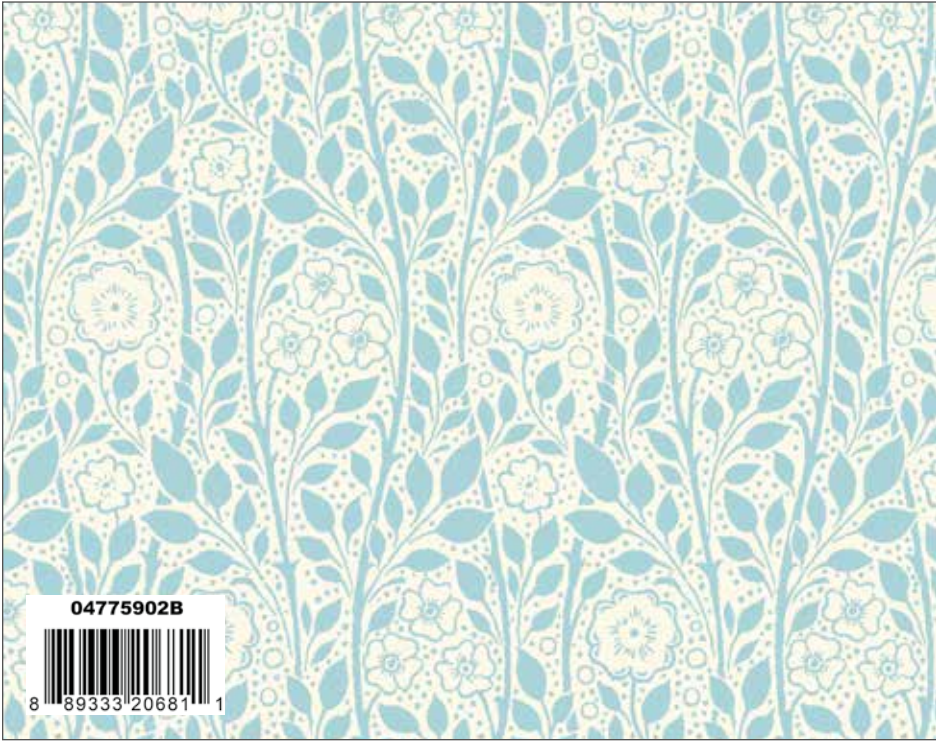


1YD-04775910-2-15





Wild Bloom B



Merton Rose B



Argyll Tile B



Kyoto Posey B



Kyoto Posey C



Palmeria B



Java Feather A



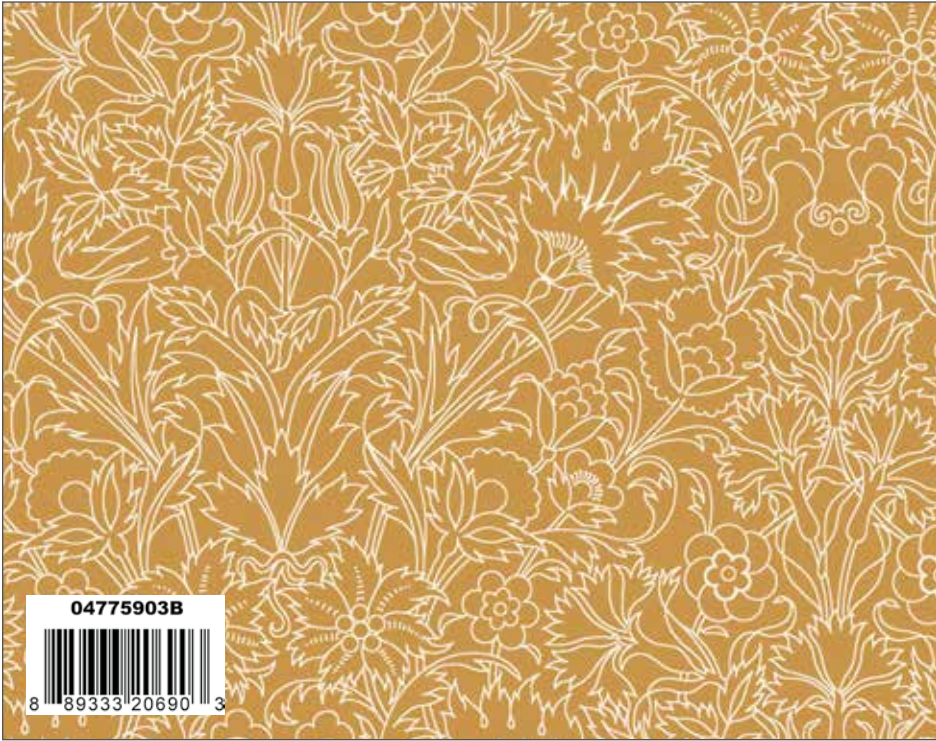
Daisy Bazaar B



Regent Rose B



Culodden Vine B



Turner B



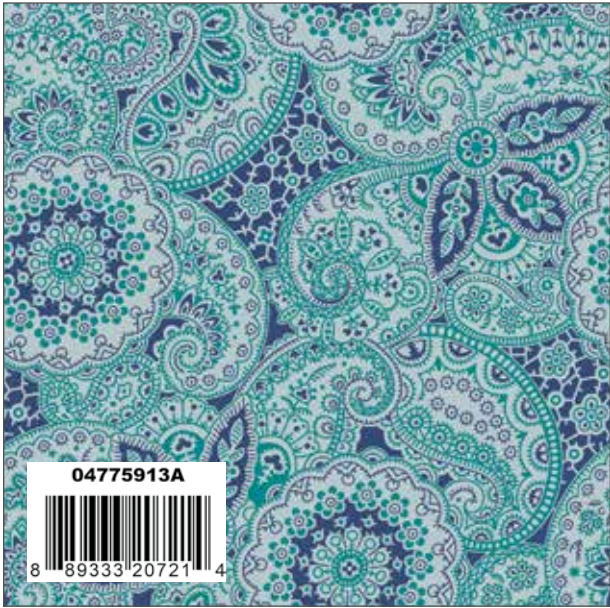
Merchant's Tree C



Kingly Sprig B



Osaka Blossom B



Paisley Meadow A

COLLECTION 3 PRECUTS

5-Inch Stacker
42 Pieces



5-04775910-3-42



10-Inch Stacker
42 Pieces



10-04775910-3-42



Rolie Polie
40 Pieces



RP-04775910-3-40



Fat Quarter



FQ-04775910-3-15



1 Yard Bundle
15 Pieces



1YD-04775910-3-15



Butterfly Garden by The RBD Designers



Quilt Size 61" x 73"

Fabric Requirements

1 FQ-04775910-1-15 Collection 1 Fat Quarter Bundle

1 1/2 Yards 04775901C Wild Bloom C

1/4 Yard 04775903C Turner C

2 5/8 Yards 04775715Z White Wiltshire Shade

5/8 Yard Binding

Free Pattern will be available at:
www.rileyblakedesigns.com/free-quilt-patterns

French Bloom by The RBD Designers



Quilt Size 69" x 83"

Fabric Requirements

- 1 FQ-04775910-2-15 Collection 2 Fat Quarter Bundle
- 1 5/8 Yards 04775901A Wild Bloom A
- 3 1/8 Yards 04775715Z White Wiltshire Shade
- 3/4 Yard Binding

Free Pattern will be available at:
www.rileyblakedesigns.com/free-quilt-patterns

Blue Cheese by The RBD Designers



Quilt Size 69" x 83"

Fabric Requirements

- 1 FQ-04775910-3-15 Collection 3 Fat Quarter Bundle
- 1 7/8 Yards 04775901B Wild Bloom B
- 2 Yards 04775909B Argyll Tile B
- 1/2 Yard 04775903B Turner B
- 1 1/2 Yards 04775678Z Oyster Wiltshire Shadow
- 3/4 Yards Binding

Free Pattern will be available at:
www.rileyblakedesigns.com/free-quilt-patterns

The Emporium Collection

The latest quilting collection from Liberty Fabrics is inspired by the historic architecture and interiors of Liberty's iconic London flagship store. The Emporium Collection's eclectic mix of floral, paisley and geometric designs draw from ornately carved wooden details, hand-crafted tilework, and the flagship's beautiful flower stall. The collection is available in three distinct colour stories, perfect for the modern interior. Each colour story reflects a different facet of the magnificent store. Regal blue and mustard give a nod to the tiled interiors, while an exuberant multicolour story is inspired by the oriental rug room. Finally, a monochromatic colour story is balanced with soft pink highlights, paying homage to Liberty's timbered exterior.

Culloden Vine

A celebration of interwoven branches, scrolling foliage and stylised flowers make up this dramatic design. The mirrored repeat is reminiscent of great Art & Crafts patterns of the past.

Turner

This delicate botanical was based on a fabric swatch from the Liberty archive, dating from around the 1880s. A simple yet detailed monochrome print, featuring outlined oriental flowers including stylised carnations and exotic palm-shaped leaves. The beautiful organic lines of this design are reminiscent of wood carvings and decorative plaster work found within the iconic Liberty store.

Merchants Tree

Originally hand-painted in the early 1990s, Merchants Tree has been adapted especially for The Emporium Collection. Jacobean style flowers adorn trailing leafy branches, creating an exotic and striking colourful garden.

Kingly Spring

Inspired by a small floral motif in the Liberty archive, this delicate line drawn flower is alternated with a spot and mirrored in a geometric layout to create a contemporary two directional print.

Kyoto Posey

Inspired by an oriental patchwork design from the Liberty archive, Kyoto posey features small scattered bunches of outlined daisies. The stylised nature of the flowers is reminiscent of traditional Japanese botanical prints Arthur Liberty would have seen when he travelled to Japan in 1889.

Java Feather

One of the main motifs of the Aesthetic movement, the peacock feather has always been a symbol of exquisite beauty and exoticism. Inspired by an archive design from c.1860, the single delicate peacock feather in this design is highlighted by a scattered layout, allowing for the pastel hued backgrounds to create perfect colour coordinates.

Paisley Meadow

Liberty owns a wonderful collection of hand-painted paisleys, which has provided the studio with inspiration for many years. This particular one was redrawn from a 1960s botanical paisley and features a detailed network of stylised rounded flowers and leafy shapes, arranged over a floral lace background.

Wild Bloom

Originally created as a Liberty furnishing fabric in 1989, Wild Bloom is a glorious floral celebration. This dense, detailed and richly painted botanical features an array of flowers including roses, dahlias, lilac and tulips – reminiscent of Liberty's famous flower stall.

Merton Rose

This Tudor style rose design pays homage to the rich heritage of Liberty, recalling a signature motif that appears in various forms throughout the Liberty building. A contemporary take on a traditional Arts & Crafts pattern, this monochrome floral print was originally created for Liberty in 1967.

Argyll Tile

Inspired by the wooden panels and stained-glass window designs found dotted around the Liberty shop, this elegant pattern features geometric as well as floral elements. Stylised patterns are arranged in a check layout, reminiscent of traditional tile compositions.

Palmeria

Redrawn from a fabric swatch found in the Liberty archive, Palmeria offers a wonderful representation of simple flowering paisleys. The ornamental paisley shapes were drawn in an ethnic style and arranged in a compact layout, creating subtle stripe formations.

Daisy Bazaar

Tiny flowers are hidden within the delicate paisley leaves of this design which was inspired by a paper impression found in one of Liberty's oldest pattern books. A tribute to the style of early wood-block prints, highlighting Arthur Liberty's fascination with exotic and hand-crafted designs from distant lands.

Regent Rose

Inspired from a hand-painted artwork found in the Liberty archive, this luxurious botanical encapsulates the simple beauty of traditional roses. Scattered over a tonal background, rose flower heads and buds seem to be dancing across this multi-directional and romantic print.

Osaka Blossom

Reminiscent of Japanese blossom trees, this dense print is busily packed full of flowers but offers a calm all over design due to its tonal colourways.

PRE-ORDER ONLY

10-Yard Case Pack

CP10-04775910-45



8 89333 20738 2

15-Yard Case Pack

CP15-04775910-45



8 89333 20739 9

PRECUTS

Flat Fold Bundle
25 Yards

FFYD-EMPORIUM



8 89333 20740 5

AVAILABLE JANUARY 2021

100% FINE COTTON 43/44" WIDE • MACHINE WASH COLD • NO CHLORINE BLEACH • TUMBLE DRY LOW • REMOVE PROMPTLY

.....

Riley Blake Designs • 9646 South 500 West, Sandy, Utah 84070

Toll Free 1.888.768.8454 • Tel 801.816.0540 • Fax 801.816.0542

www.rileyblakedesigns.com

Not intended for children's sleepwear

©2020 Riley Blake Designs and Liberty Fabrics

MADE IN KOREA