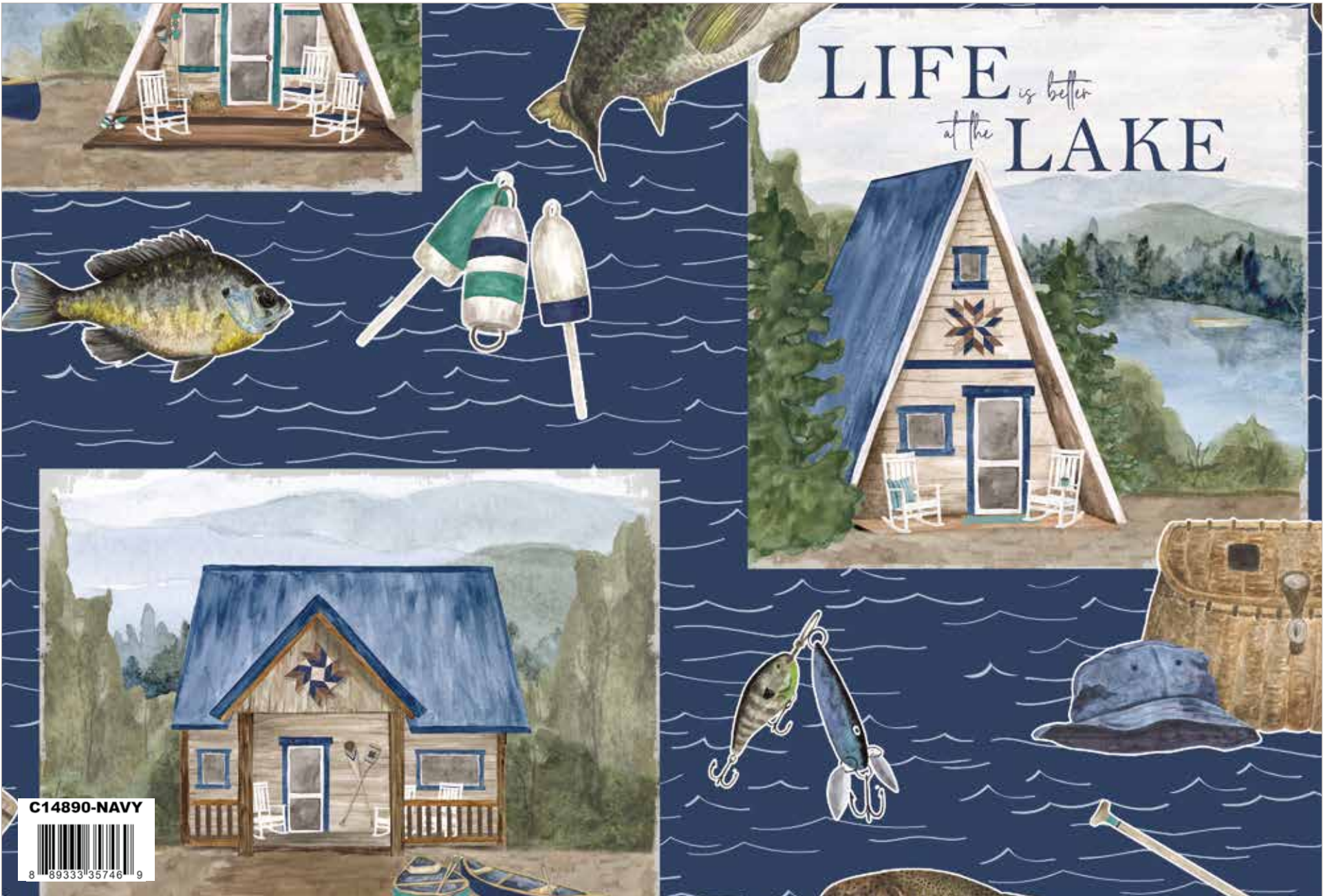


available June 2024 | R-5  
last call January 1, 2024







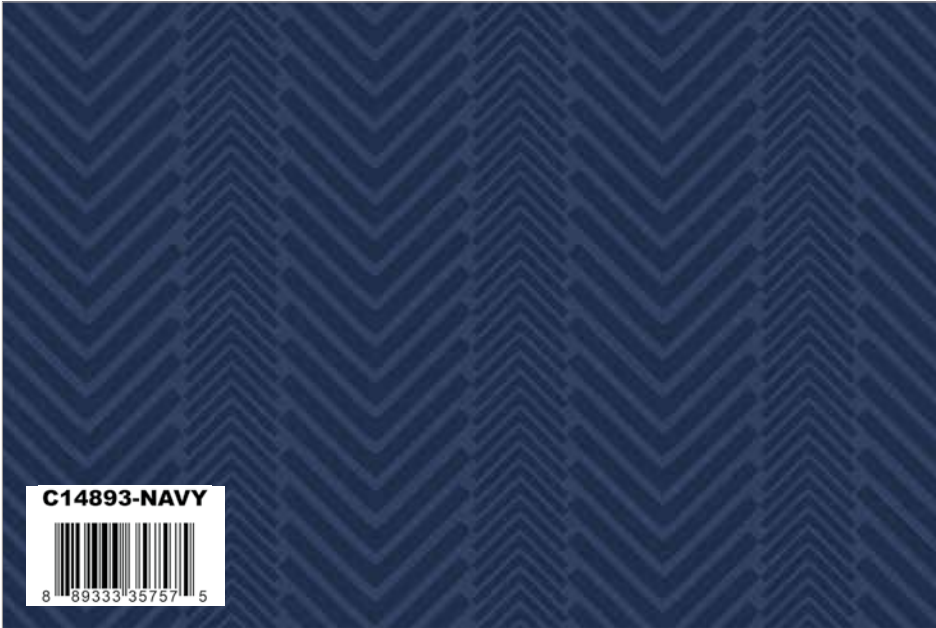
Navy Main



Tan Fish Toss



Teal Icons



Navy Herringbone



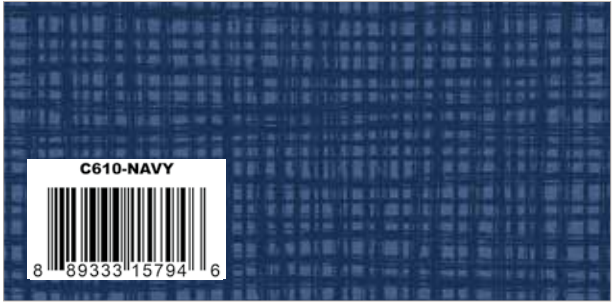
Teal Water



Stone POParazzi

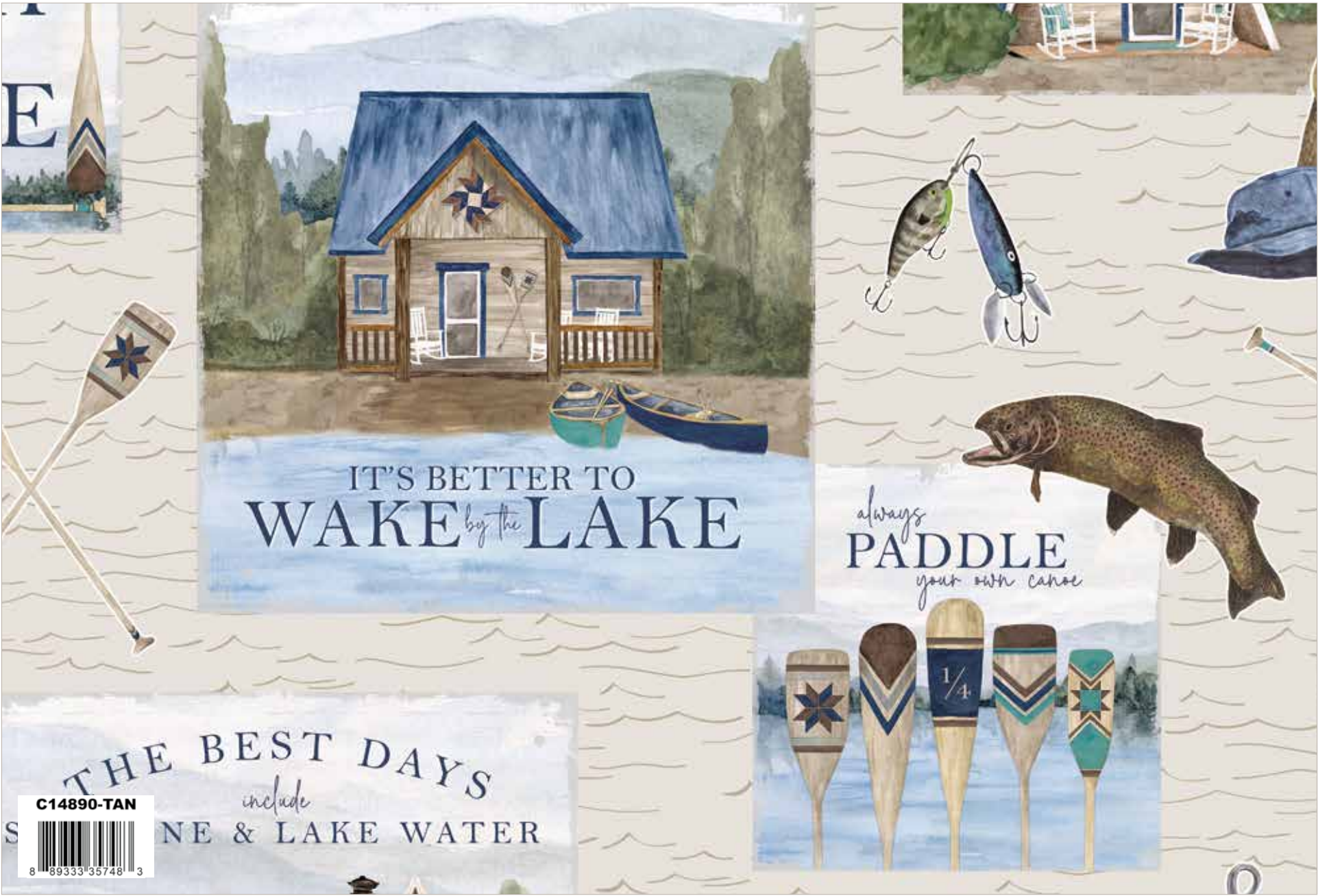


Navy Blossom



Navy Texture





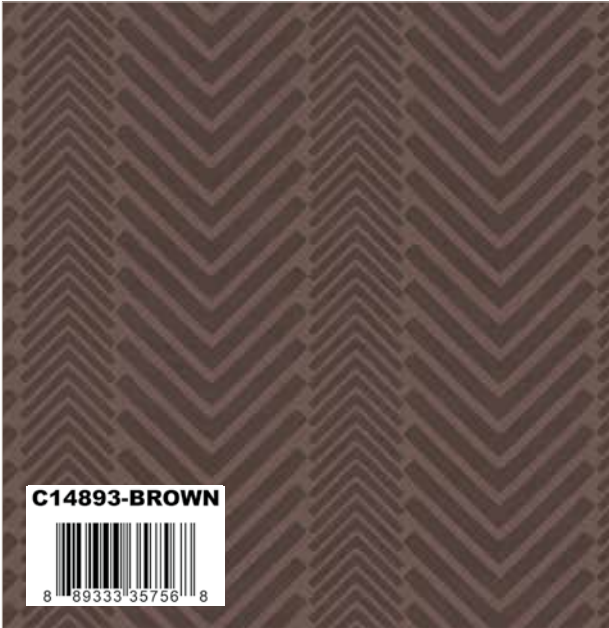
Tan Main



Sky Fish Toss



Navy Icons



Brown Herringbone



Beach Herringbone



Tan Water



Raisin Confetti Cotton

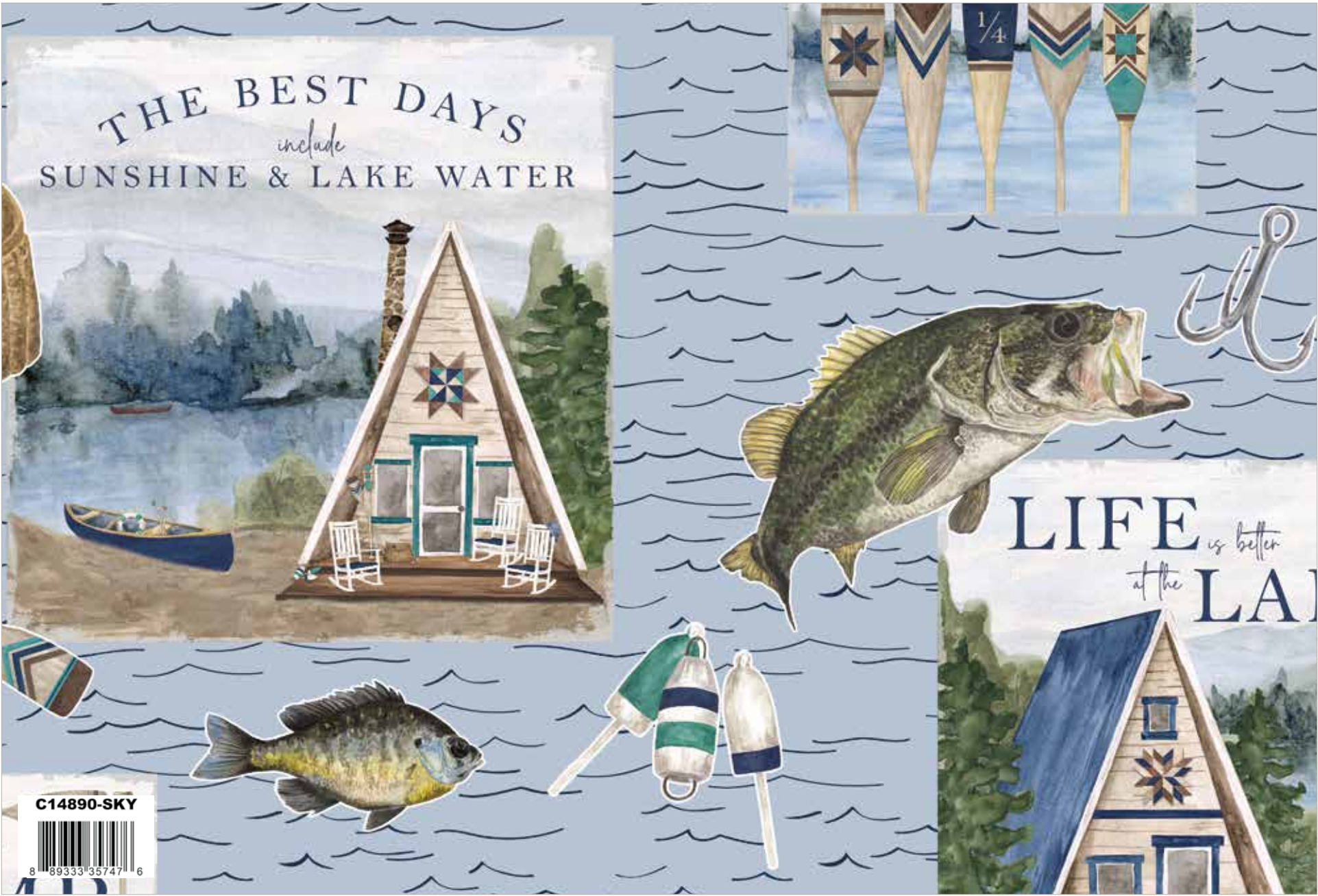


Raisin Bee Cross Stitch

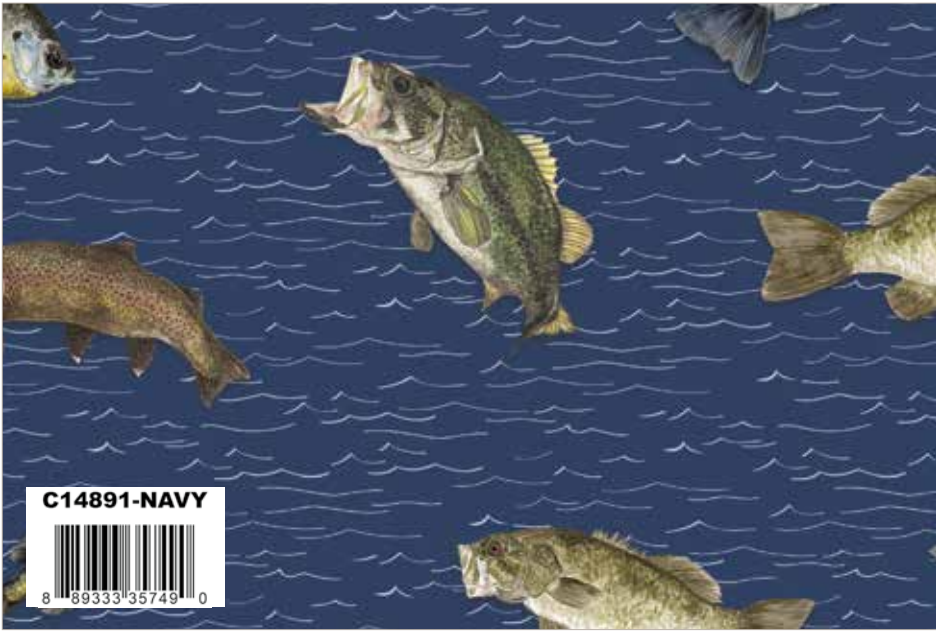


Cloud Texture





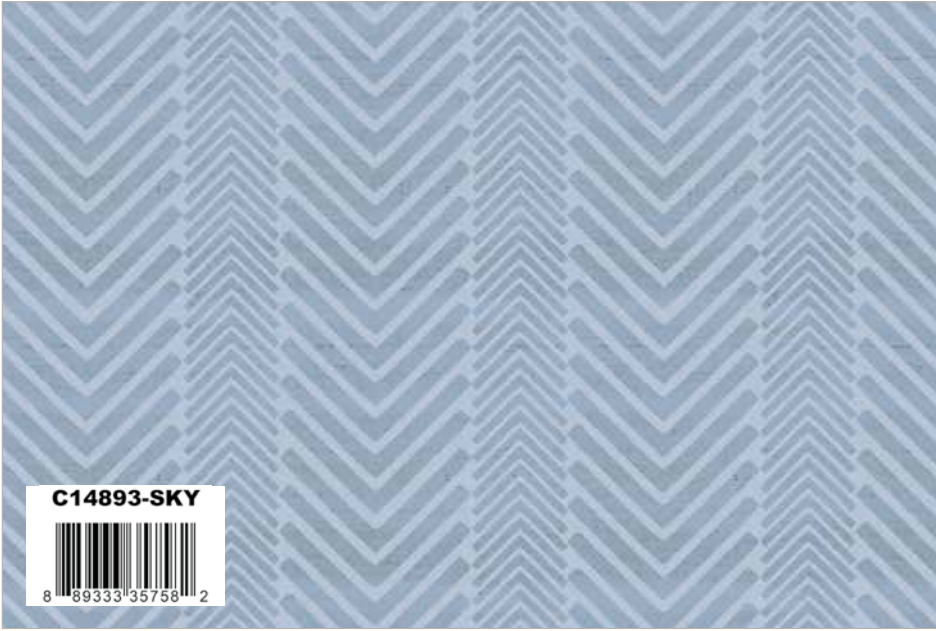
Sky Main



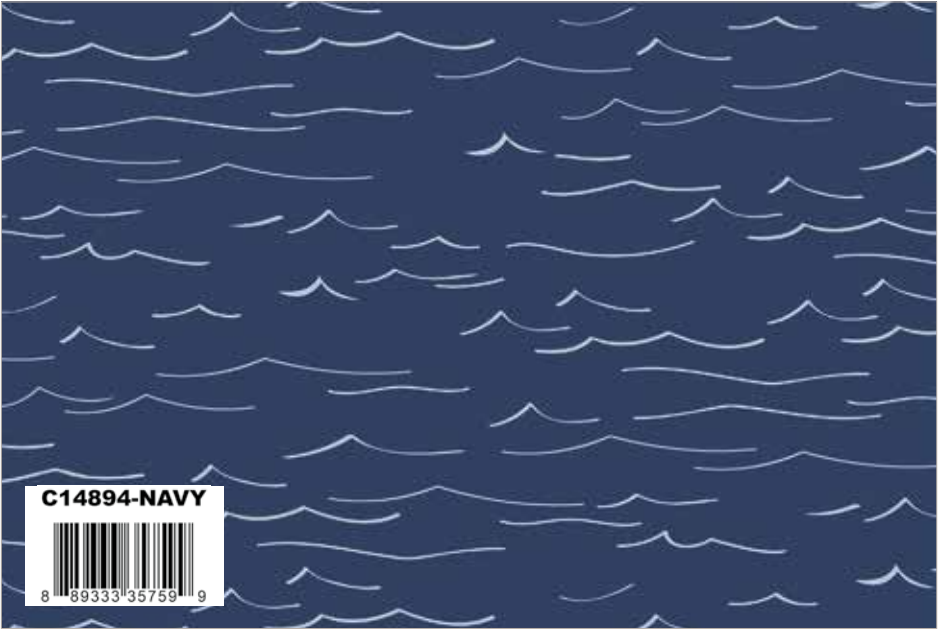
Navy Fish Toss



Parchment Icons



Sky Herringbone



Navy Water



Pebble Bee Cross Stitch

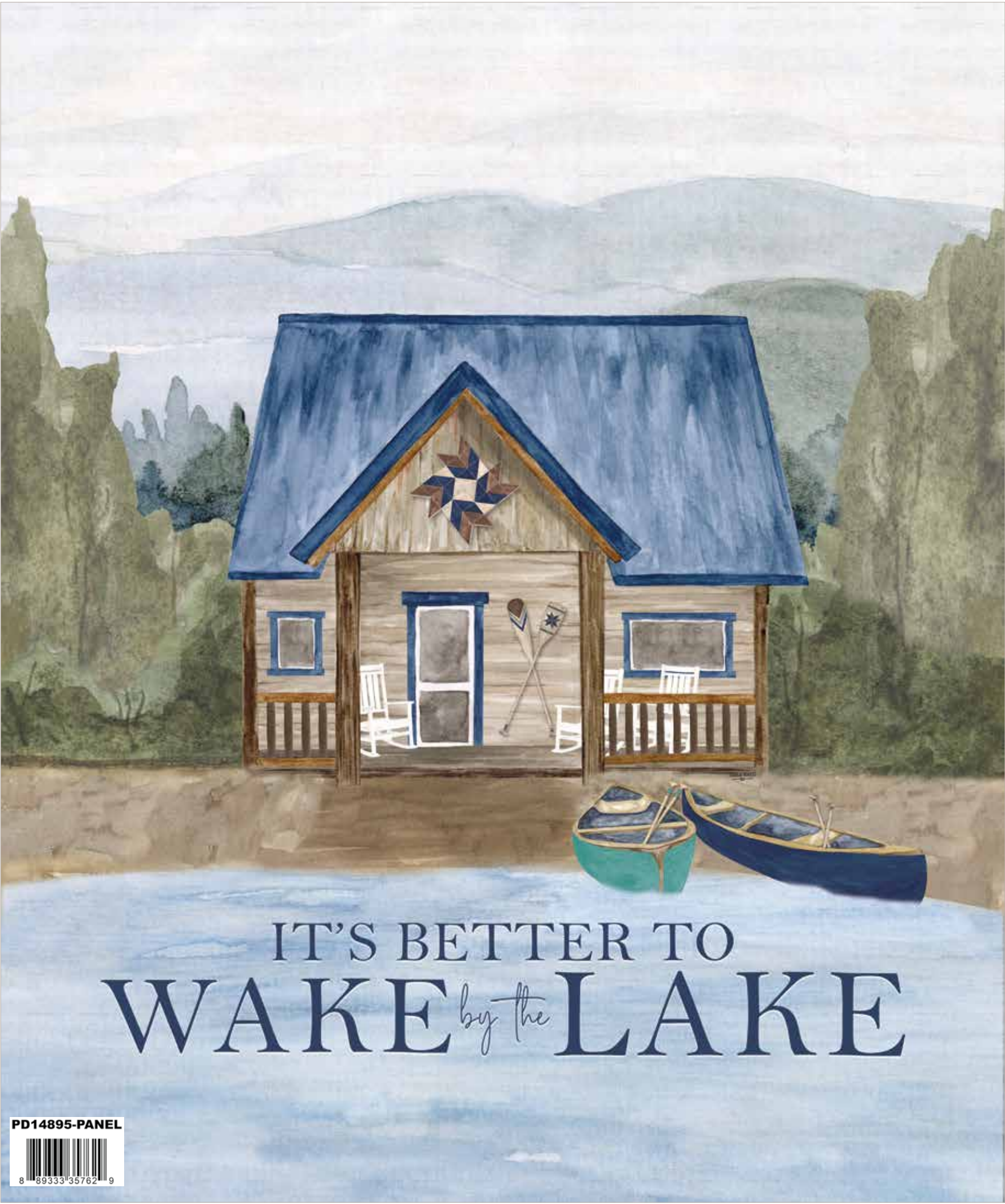


Pebble Confetti Cotton



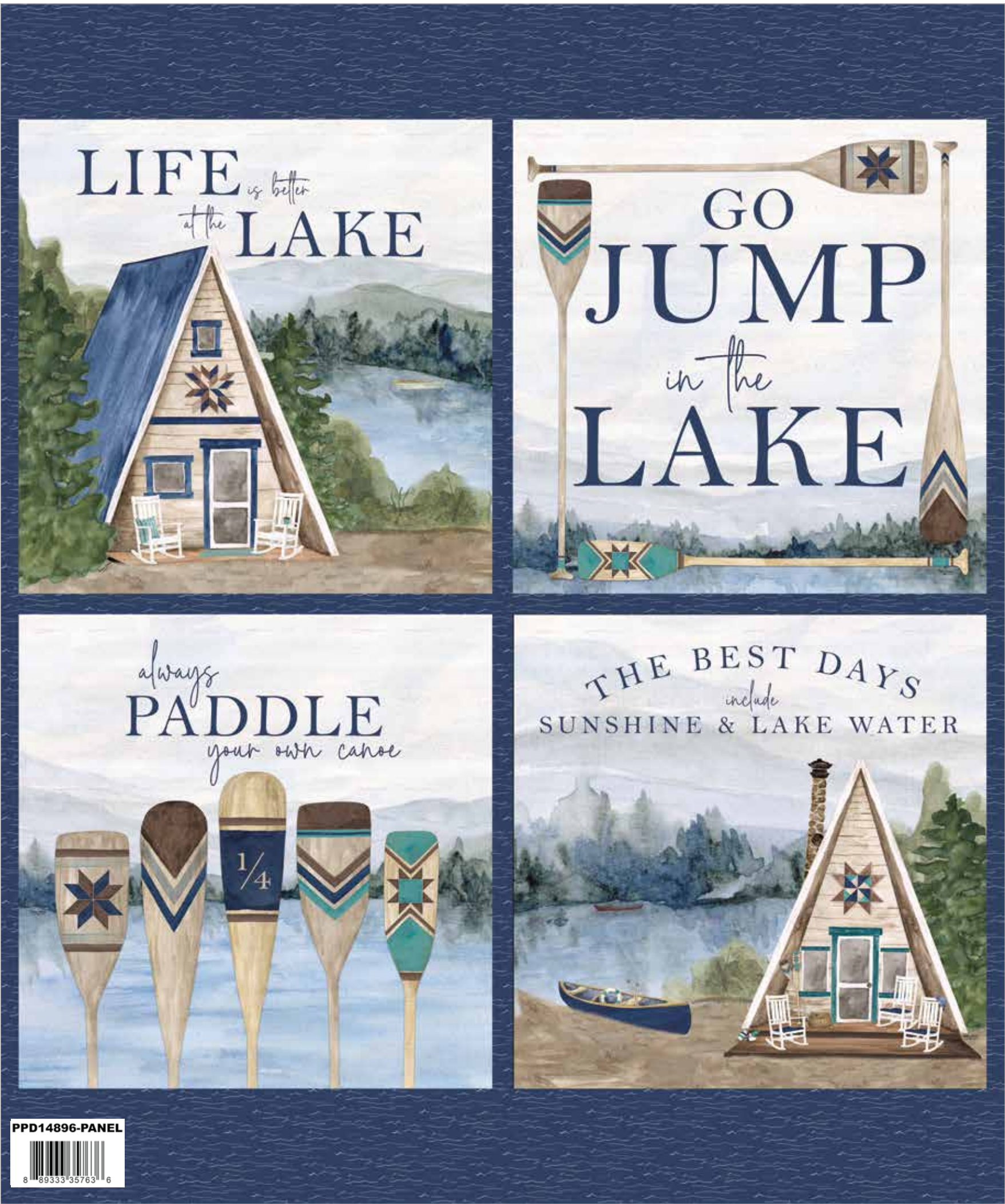
Pewter Confetti Cotton





It's Better to Wake by the Lake Panel  
(10 panels per bolt)  
Scaled to 25% | Actual Size is 36" x 43"



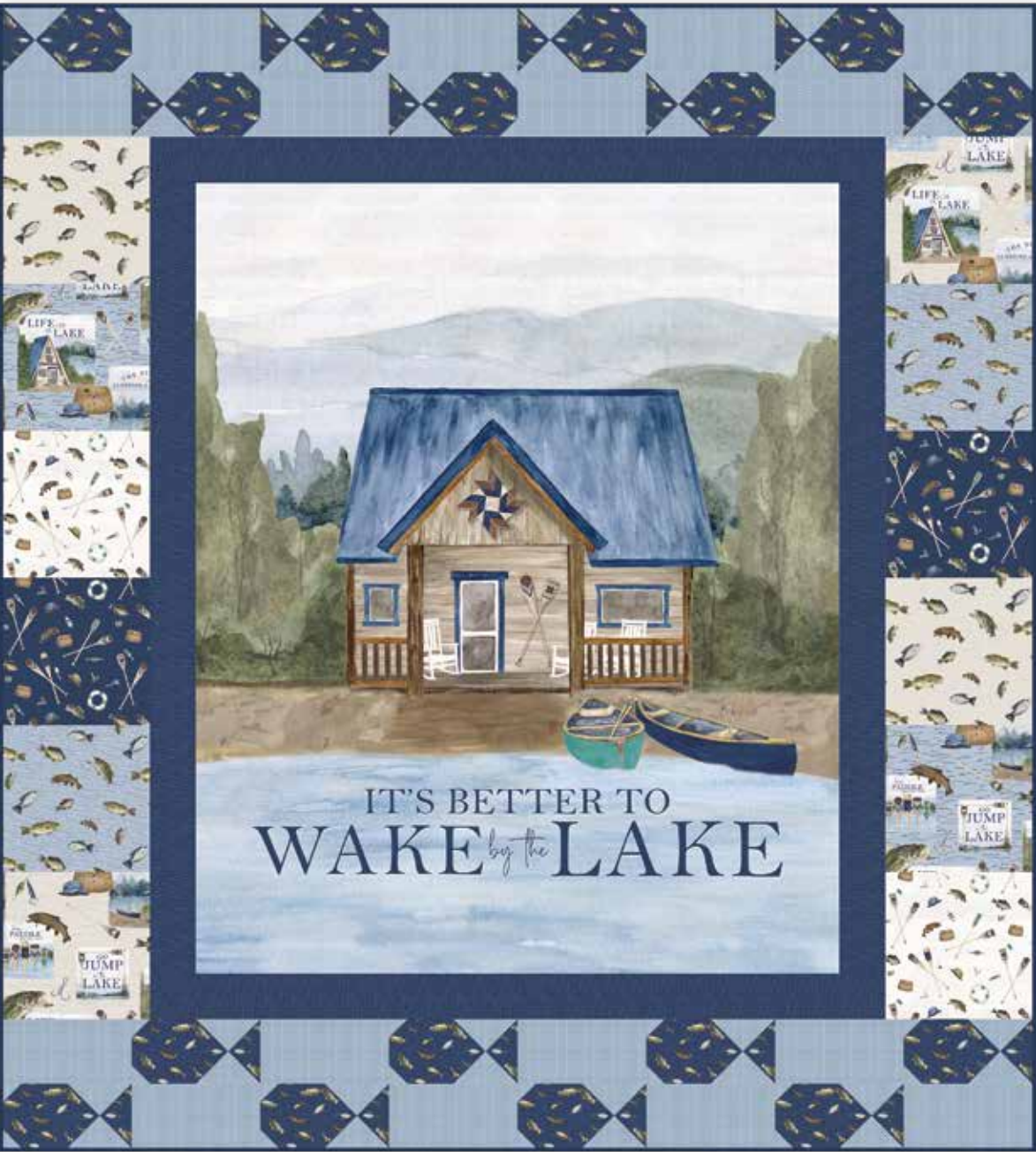


Life is Better at the Lake Pillow Panel  
(10 panels per bolt)  
Scaled to 25% | Actual Size is 36" x 43"





Lake Fishing Panel Quilt by The RBD Designers



Quilt Size 56½" x 62"

final requirements

(1) PD14895-PANEL It's Better to Wake by the Lake Panel

**1/4 Yard of Each**

C14890-SKY Main

C14890-TAN Main

C14891-SKY Fish Toss

C14891-TAN Fish Toss

C14892-NAVY Icons

C14892-PARCHMENT Icons

**Additional Fabrics**

1/2 Yard C14891-NAVY Fish Toss

1 Yard C14893-SKY Herringbone

5/8 Yard C14894-NAVY Water

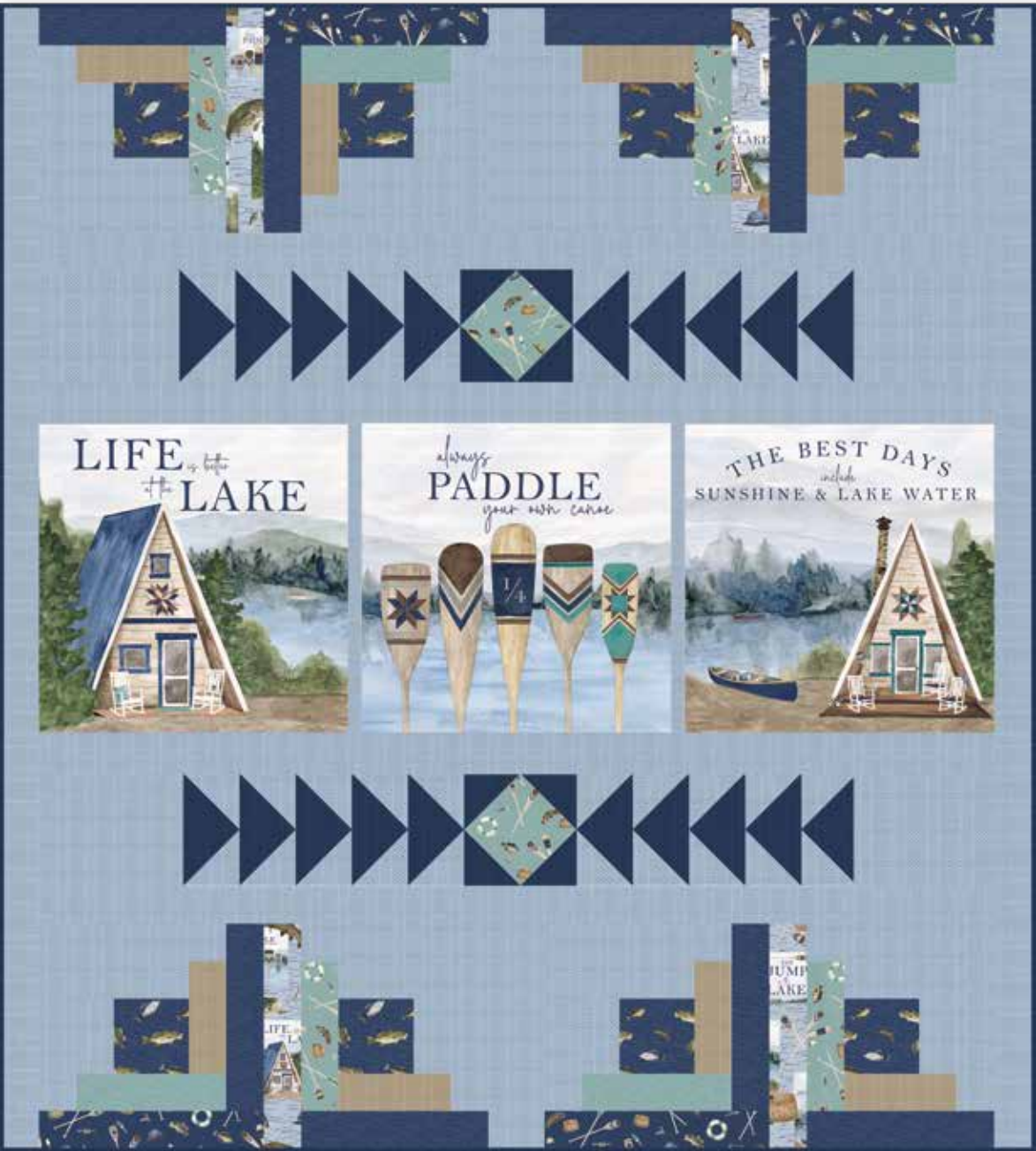
5/8 Yard C14893-NAVY Herringbone (Binding)

1 7/8 Yards WB640-NAVY Dapple Dot (Backing)

**FREE PATTERN  
AVAILABLE ON OUR WEBSITE  
JUNE 2024**

[www.rileyblakedesigns.com](http://www.rileyblakedesigns.com)

Better at the Lake Panel Quilt by The RBD Designers



Quilt Size 55½" x 61"

estimated requirements

(1) PPD14896-PANEL Life is Better at the Lake Pillow Panel

**1/4 Yard of Each**

C14890-SKY Main

C14892-NAVY Icons

C14893-BEACH Herringbone

C14894-NAVY Water

C14894-TEAL Water

**1/3 Yard of Each**

C14891-NAVY Fish Toss

C14892-TEAL Icons

**Additional Fabrics**

2 Yards C14893-SKY Herringbone (Background)

1 Yard C14893-NAVY Herringbone (Includes Binding)

1 7/8 Yards WB200-NIGHTTIME Shade (Backing)

**FREE PATTERN  
AVAILABLE ON OUR WEBSITE  
JUNE 2024**

[www.rileyblakedesigns.com](http://www.rileyblakedesigns.com)



The Flip Side by Primrose Cottage Quilts



Quilt Size 60" x 60"

estimated requirements

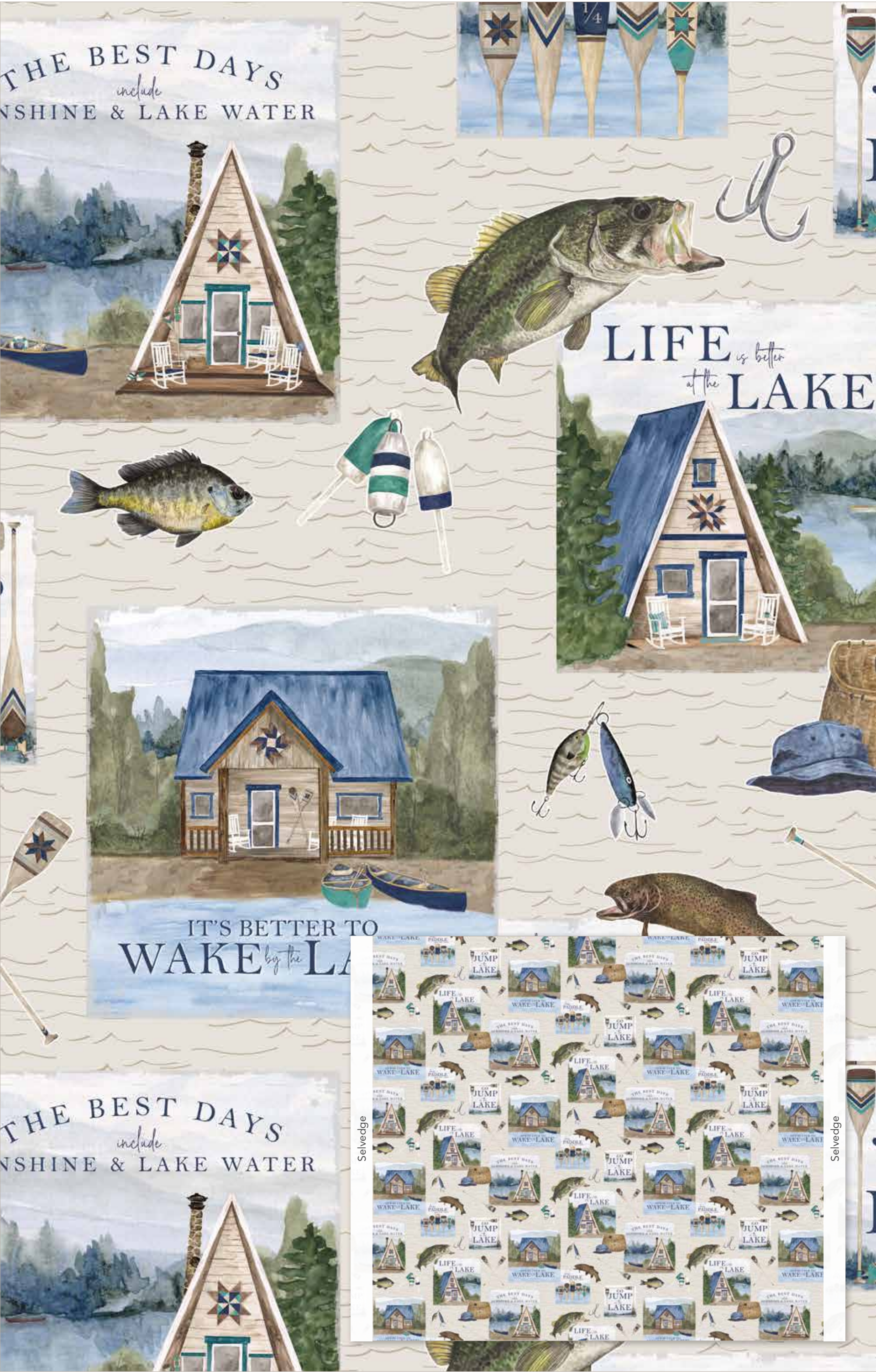
- (1) FQ-14890-16 Fat Quarter Bundle
- Additional Fabrics**
- 1 3/4 Yards C120-CLOUD Solid (Background)
- 5/8 Yard C14893-NAVY Herringbone (Binding)
- 2 Yards WB200-CHAMBAY Shade (Backing)



Pre-order the  
P144-FLIPSIDE  
Quilt Pattern







C14890 Tan Main

Shown as Repeat 44" x 36"





Tara Reed  
@artisttareed

## About the Line

I'm excited to share my second lake themed fabric collection with you. When I was thinking about what to design I decided to create images that would make people say, "I want to go there!"

Cozy A-frames and cabins on picturesque lakes. Quilt blocks on the houses and a few of the oars and an homage to the 1/4" seam on another. The color palette was inspired by nature with peaceful tones that will complement your home decor. Now that the fabric is complete, the hunt is on for a vacation spot that looks like this so I can go snuggle up with a quilt, a book and enjoy the fresh air.

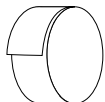
## precuts



**FFYD-14890**



Flat Fold Bundle  
25 Yards



**RP-14890-40**



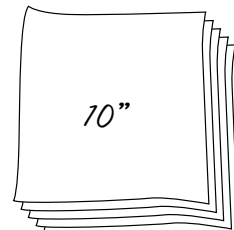
Rolie Polie  
40 Pieces



**5-14890-42**



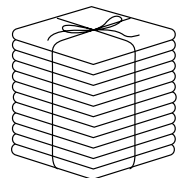
5-Inch Stacker  
42 Pieces



**10-14890-42**



10-Inch Stacker  
42 Pieces



**FQ-14890-16**



Fat Quarter Bundle  
16 Pieces

## pre-order only

ADD ANY LAMINATE WITH 100 YARDS MINIMUM  
PANELS ARE INCLUDED IN CASE PACKS



**1YD-14890N-7**



Navy - 1-Yard Bundle  
7 Pieces



**1YD-14890S-7**



Sky - 1-Yard Bundle  
7 Pieces



**1YD-14890T-8**



Tan - 1-Yard Bundle  
8 Pieces

**CP10-14890-18**



10-Yard Case Pack

**CP15-14890-18**



15-Yard Case Pack

available June 2024 last call January 1, 2024

100% FINE COTTON · 43/44" WIDE · MADE IN KOREA



9646 South 500 West  
Sandy, UT 84070  
888.768.8454 · 801.816.0540  
www.rileyblakedesigns.com

©2023 Riley Blake Designs & Tara Reed

Machine Wash Cold  
No Chlorine Bleach  
Tumble Dry Low  
Remove Promptly  
Not Intended for Children's Sleepwear

The projects portrayed are virtual images. The look of the projects may differ with actual fabric.

The project virtual(s) shown may be different than the image shown on the pattern cover.

Approximate fabric requirements are listed to aid in estimating the amount of yardage to order and are subject to change.

Backing yardage is shown using the best use of fabric and may not be intended for directional fabric.