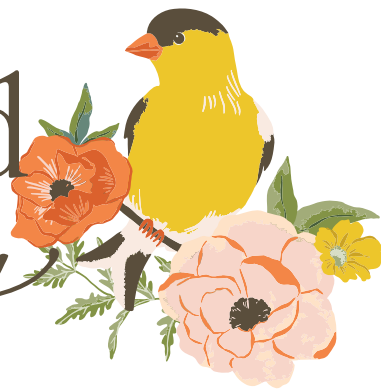


# Winged Medley

Katherine  
LENIUS



available March 2025 | R-4  
last call October 1, 2024



C15910-CLOUD



Cloud Main



C15911-LATTE



Latte Birds



C15912-BROWN



Brown Boho Blooms



C15913-BROWN



Brown Petals



C15914-DUSTYROSE



Dusty Rose Textile



C15915-LATTE



Latte Woodblock



C15916-ORANGE



Orange Tile



C120-MELLOWROSE



Mellow Rose Confetti Cotton



C805-PEACHESNCREAM



Peaches 'n Cream POParazzi



C12556-RAISIN



Raisin Lisa Bee Gingham



C640-RAISIN



Raisin Dapple Dot



C15910-BLUSH



8 89333 40122 3

Blush Main



C15911-CLOUD



8 89333 40125 4

Cloud Birds



C15912-CLOUD



8 89333 40129 2

Cloud Boho Blooms



C15913-SAGE



8 89333 40133 9

Sage Petals



C15914-CLOUD



8 89333 40134 6

Cloud Textile



C15915-TEAL



8 89333 40139 1

Teal Woodblock



C15916-SAGE



8 89333 40142 1

Sage Tile



C745-PUMPKIN



8 89333 19256 5

Pumpkin Bee Cross Stitch



C120-SHELL



8 89333 33816 1

Shell Confetti Cotton



C640-FROSTING



8 89333 26348 7

Frosting Dapple Dot



C745-RILEYTEAL



8 89333 19268 8

Riley Teal Bee Cross Stitch



C15910-TEAL



Teal Main



C15911-SAGE



Sage Birds



C15912-TEAL



Teal Boho Blooms



C15913-CLOUD



Cloud Petals



C15914-TEAL



Teal Textile



C15915-DUSTYROSE



Dusty Rose Woodblock



C15916-BROWN



Brown Tile



coordinating basics

C805-WHITE



White POParazzi



C605-SWEETMINT



Sweet Mint Shabby



C780-TEAL



Teal Grasscloth Cotton



C120-BALLERINA



Ballerina Confetti Cotton

Winged Medley 107/108" Wide Backs



Cloud Gallery Wide Back



Teal Floral Wide Back

Birds and Bouquets Panel



Birds and Bouquets Panel  
(10 panels per bolt)  
Scaled to 28% | Actual Size is 36" x 43"



Bouquet Panel

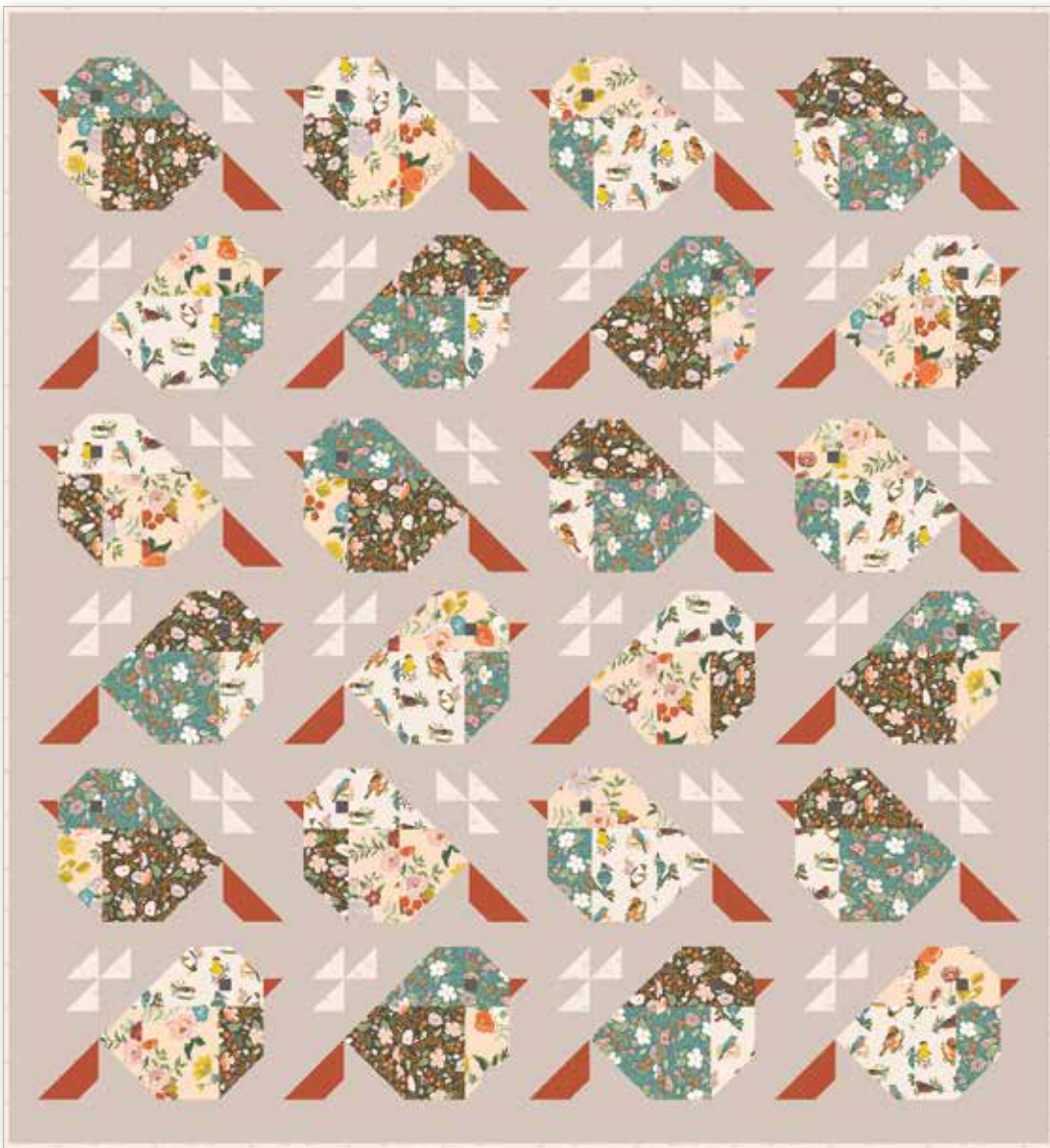


P15919-PANEL



Bouquet Panel  
(10 panels per bolt)  
Scaled to 28% | Actual Size is 36" x 43"

## Sparrows by Pen + Paper Patterns



Quilt Size 65½" x 71"

### estimated requirements

**1/2 Yard of Each**

C15910-BLUSH Main

C15911-CLOUD Birds

C15912-BROWN Boho Blooms

C15912-TEAL Boho Blooms

C120-BURNTORANGE Confetti Cotton

**Additional Fabrics**

1/16 Yard C120-SHADOW Confetti Cotton

3 1/2 Yards C120-ASH Confetti Cotton (Background)

1/2 Yard C15915-LATTE Woodblock (Binding)

2 1/8 Yards WB15917-CLOUD Gallery (Backing)



Pre-order the  
P176-SPARROWS  
Quilt Pattern



## The Violet Backpack by Knot + Thread Design



Bag Dimensions: 11" x 9" x 4"

### estimated requirements

**SAGE BACKPACK**

**1/2 Yard of Each**

C15911-SAGE Birds

C15913-SAGE Petals

**Additional Fabric**

3/4 Yard C15915-TEAL Woodblock

**TEAL BACKPACK**

**1/2 Yard of Each**

C15910-TEAL Main

C15913-SAGE Petals

**Additional Fabric**

3/4 Yard C15914-DUSTYROSE Textile

**ADDITIONAL SUPPLIES NEEDED**

1/4 Yard Fusible Interfacing

1/2 Yard Package Foam Interfacing

(1) 8" Handbag Zipper

(1) 22" Double-Slide Handbag Zipper

3 Yards 1" Handle Webbing



Pre-order the  
P234-VIOLETBACKPACK  
Project Pattern



From the Garden Window by The RBD Designers



Quilt Size 67½" x 67½"

estimated requirements

(1) P15918-PANEL Birds and Bouquets Panel

**1/4 Yard of Each**

C15911-CLOUD Birds

C15912-BROWN Blooms

C15912-CLOUD Blooms

C15914-CLOUD Textile

C15916-SAGE Tile

**1/3 Yard of Each**

C15910-TEAL Main

C15913-BROWN Petals

C15916-ORANGE Tile

**1/2 Yard of Each**

C15910-BLUSH Main

C15911-LATTE Birds

**2/3 Yard of Each**

C15913-SAGE Petals

C15914-TEAL Textile

C15915-DUSTYROSE Woodblock

**Additional Fabrics**

5/8 Yard C15915-TEAL Woodblock (Binding)

2 1/8 Yards WB15917-CLOUD Gallery (Backing)

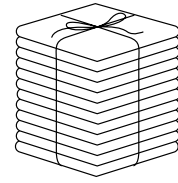
FREE PATTERN  
AVAILABLE ON OUR WEBSITE  
MARCH 2025

[www.rileyblakedesigns.com](http://www.rileyblakedesigns.com)

## Advanced Sample Bundle

ONLY AVAILABLE THROUGH LOCAL RBD REPS

- Pre-order only
- One per customer
- Not available on website



**ASY-FQ-15910-21**



ASY Fat Quarter Bundle  
21 Pieces

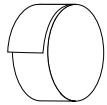


## About the Line

I'm celebrating my inner bohemian with this eclectic combination of delightful prints. Within this assortment of blooms and birds I wanted to create a collection that's both sophisticated and playful at the same time. Mixing and matching designs, all the prints come together in a layered medley of color and pattern. When I listen to birds sing it sounds so simple but often it's actually very complex. I'm a singer myself and I think whenever we create something beautiful, whether in music or art or quilting, it's because we've pulled all the strands together, different though they may be, to make one beautiful song.

*Katherine Lenius*  
@katherinelenius

## precuts



**RP-15910-40**



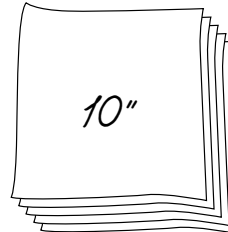
Rolie Polie  
40 Pieces



**5-15910-42**



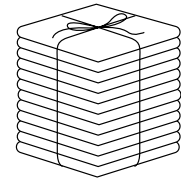
5-Inch Stacker  
42 Pieces



**10-15910-42**



10-Inch Stacker  
42 Pieces



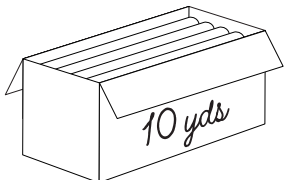
**FQ-15910-21**



Fat Quarter Bundle  
21 Pieces

## pre-order only

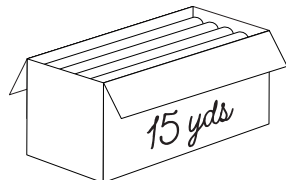
ADD ANY LAMINATE WITH 100 YARDS MINIMUM



**CP10-15910-23**



10-Yard Case Pack



**CP15-15910-23**



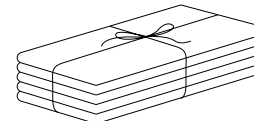
15-Yard Case Pack



**1YD-15910B-9**



Blush - 1-Yard Bundle  
9 Pieces



**1YD-15910C-9**



Cloud - 1-Yard Bundle  
9 Pieces



**1YD-15910T-9**



Teal - 1-Yard Bundle  
9 Pieces

PANELS ARE INCLUDED IN CASE PACKS  
WIDE BACKS ARE NOT INCLUDED IN CASE PACKS

available March 2025 **last call October 1, 2024**

100% FINE COTTON · 43/44" WIDE · MADE IN KOREA



9646 South 500 West  
Sandy, UT 84070  
888.768.8454 · 801.816.0540  
www.rileyblakedesigns.com

©2024 Riley Blake Designs & Katherine Lenius

Machine Wash Cold  
No Chlorine Bleach  
Tumble Dry Low  
Remove Promptly  
Not Intended for Children's Sleepwear

The projects portrayed are virtual images. The look of the projects may differ with actual fabric.

The project virtual(s) shown may be different than the image shown on the pattern cover.

Approximate fabric requirements are listed to aid in estimating the amount of yardage to order and are subject to change.

Backing yardage is shown using the best use of fabric and may not be intended for directional fabric.