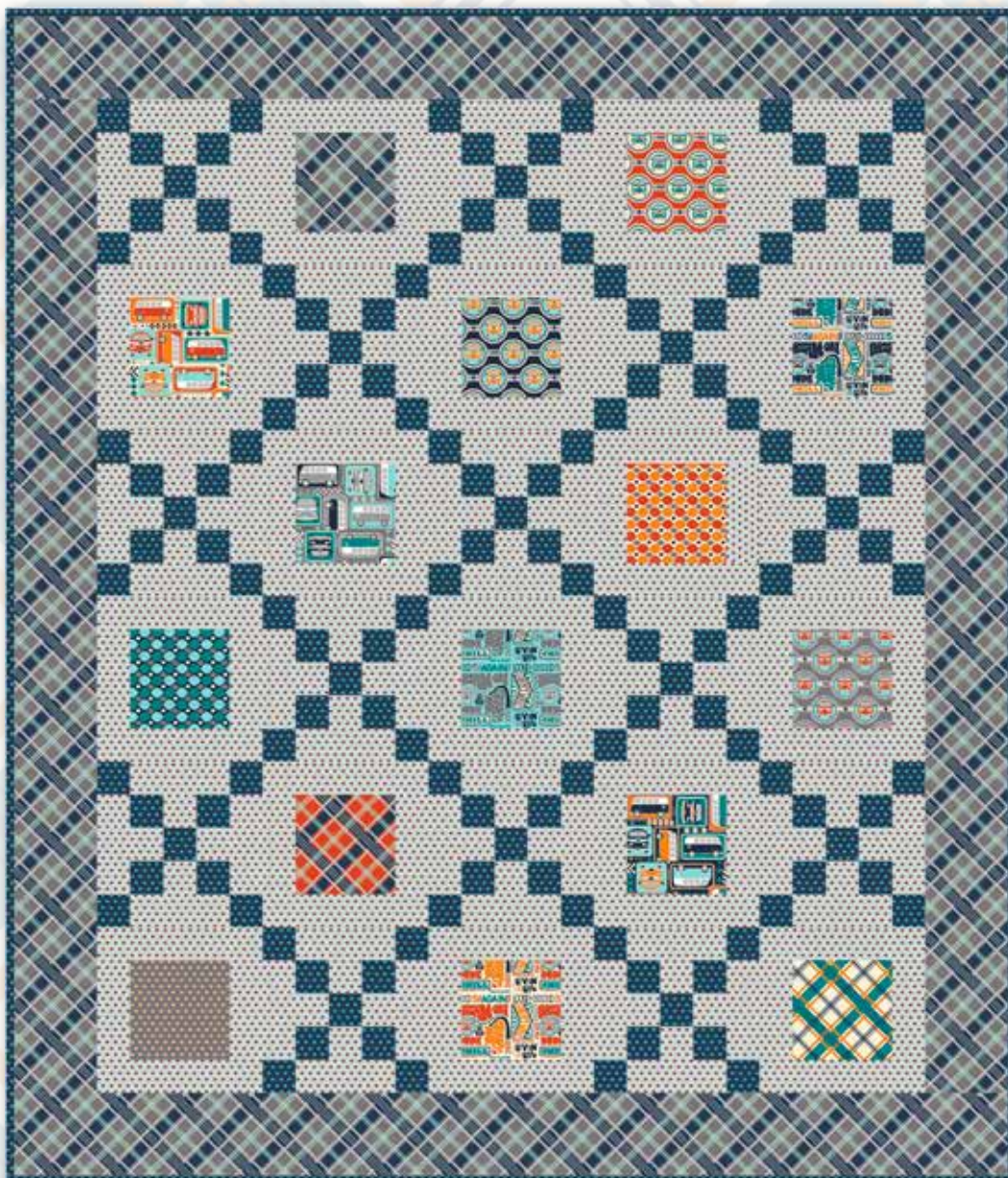




Riley Blake
DESIGNS

Groovy Grid



Groovy Grid

FINISHED QUILT SIZE 60" x 70"

Finished Block Size 10" x 10"

Measurements include $\frac{1}{4}$ " seam allowance.

Sew with right sides together unless otherwise stated.

Please check our website www.rileyblakedesigns.com for any revisions before starting this project. This pattern requires a basic knowledge of quilting technique and terminology. The quilt and block diagrams portrayed are virtual images. The layout and look of your project may differ when using actual fabric.

FABRIC REQUIREMENTS

1 Keep on Groovin' 10-Inch Stacker (10-5240-18)

1 $\frac{3}{4}$ yards (1.65 m) gray plaid (C5244 Gray)

Note: Extra allowed to match plaid

2 yards (1.85 m) light gray drops (C5245 Light Gray)

$\frac{7}{8}$ yard (85 cm) navy drops (C5245 Navy)

Binding $\frac{5}{8}$ yard (60 cm)

Backing 3 $\frac{3}{4}$ yards (3.45 m)

CUTTING REQUIREMENTS

Please read instructions first before cutting. Seam allowances vary so measure through the center of the quilt before cutting border pieces.

10-Inch Stacker

Cut 1 square 6 $\frac{1}{2}$ " x 6 $\frac{1}{2}$ " from each of the following assorted prints:

cream main, gray main, navy main, gray bus, navy bus
orange bus, aqua words, cream words, gray words
navy wallpaper, orange wallpaper, cream plaid
navy plaid, orange plaid, dark gray drops

Gray Plaid

Cut 7 strips 5 $\frac{1}{2}$ " x WOF for Border.

Light Gray Drops

Cut 4 strips 2 $\frac{1}{2}$ " x WOF.

Cut 2 strips 6 $\frac{1}{2}$ " x WOF.

Cut 10 strips 2 $\frac{1}{2}$ " x WOF. Cut the strips into 60 rectangles 2 $\frac{1}{2}$ " x 6 $\frac{1}{2}$ ".

Cut 2 strips 10 $\frac{1}{2}$ " x WOF. Cut the strips into 30 rectangles 2 $\frac{1}{2}$ " x 10 $\frac{1}{2}$ ".

Navy Drops

Cut 9 strips 2 $\frac{1}{2}$ " x WOF.

QUILT ASSEMBLY

Refer to Quilt Center Diagram for placement of fabrics.

Chain Block

Sew a 2 $\frac{1}{2}$ " navy drops strip to each side of a 2 $\frac{1}{2}$ " light gray drops strip. Press. Repeat to make 2 navy/light gray/navy strip sets. Cut the strip sets into 30 segments 2 $\frac{1}{2}$ " wide. Label as Segment A.



Segment A

Sew a 2 $\frac{1}{2}$ " light gray drops strip to each side of a 2 $\frac{1}{2}$ " navy drops strip to make 1 light gray/navy/light gray strip set. Press. Cut the strip set into 15 segments 2 $\frac{1}{2}$ " wide. Label as Segment B.



Segment B

Sew a Segment A to the top and bottom of a Segment B to create a Nine-Patch Unit. Repeat to make 15 Nine-Patch Units.



Nine-Patch Unit

Sew a light gray drops 2 $\frac{1}{2}$ " x 6 $\frac{1}{2}$ " rectangle to each side of a Nine-Patch Unit to create Center Unit A. Repeat to make 15 Center Unit As.



Center Unit A

Sew a 2 $\frac{1}{2}$ " navy drops strip to each side of a 6 $\frac{1}{2}$ " light gray drops strip. Press. Repeat to make 2 navy/light gray/navy strip sets. Cut the strip sets into 30 segments 2 $\frac{1}{2}$ " wide. Label as Segment C.



Segment C

Groovy Grid

Sew a Segment C to the top and bottom of a Center Unit A to create the Chain Block. Repeat to make 15 Chain Blocks.



Chain Block

Groovin' Block

Sew a light gray drops $2\frac{1}{2}$ " x $6\frac{1}{2}$ " rectangle to each side of an assorted print $6\frac{1}{2}$ " square to create Center Unit D. Repeat to make 15 Center Unit Ds.



Center Unit D

Sew a light gray drops $2\frac{1}{2}$ " x $10\frac{1}{2}$ " rectangle to the top and bottom of Center Unit D to create the Groovin' Block. Repeat to make 15 Groovin' Blocks.



Groovin' Block

Quilt Center Assembly

See quilt photo for Chain and Groovin' Block placement. Lay out the blocks in 6 rows of 5 blocks. Sew the rows together to complete the quilt center.

Border

Seam allowances vary so measure through the center of the quilt before cutting border pieces. Sew border strips together end to end if necessary to get the length needed. Sew side borders first.

Side borders should be $60\frac{1}{2}$ ". Top and bottom borders should be $60\frac{1}{2}$ ".

Finish quilt by layering the quilt top, batting, and back. Bind with your favorite Riley Blake fabric from the Keep on Groovin' Collection. Have fun with your colors and enjoy the journey of making your quilt.

Groovy Grid

Quilt Center Diagram

